

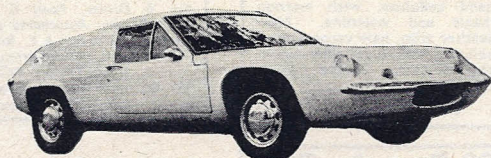
# CAMDEN

## THE PERFORMANCE

ANY MAKE OF NEW CAR SUPPLIED  
IMMEDIATE DRIVE-AWAY — H.P. & INSURANCE

### SEE LE MANS 1970 — FREE!!!!

Buy any Sports car, new or used, from us, before March 2nd and join the Camden Motors party to the famous 24-hour classic at Le Mans ABSOLUTELY FREE.



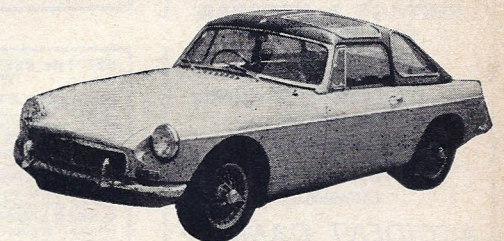
LOTUS DEALERS

1964 LOTUS Super 7. Enthusiast maintained, in red. Wide-rim wheels with SP tyres..... £499  
1969 LOTUS Super 7. Absolutely as new in white/silver. Stage 2 GT 1600 engine, radio £699  
1966 LOTUS fixed-head coupé. Includes knock-on wheels, radio and seat belts. In blue... £899  
'F' regd. LOTUS Elan drophead coupé, S/E., in tangerine: fuel injection engine..... £1,099  
'F' regd. LOTUS Elan f.h.c. White with black interior, k/o. wheels, radio, servo..... £1,149  
1969 LOTUS Elan fixed-head coupé, S/E. Lotus yellow. One owner, 4,500 miles..... £1,399  
'G' regd. LOTUS Elan +2. Golden sand with black interior. P.B. radio..... £1,599  
1969 LOTUS Europa. Only 7,000 miles from new, in special metallic green..... £1,399  
'H' regd. LOTUS Europa. In Bahama yellow with black. Very low-mileage example..... £1,499

1960 JAGUAR XK150 fixed-head coupé. Superb car in dark blue with grey. O/drive, w/wheels and radio..... £699  
1964 JAGUAR 'E'-type fixed-head coupé. Early but well maintained example in white with black interior..... £849  
1966 JAGUAR 'E'-type drophead coupé. Metallic silver grey. Chrome w/w., radio... £1,299  
1966 JAGUAR 'E'-type 2+2. Spec. includes auto. g/box, h.r.w., radio, w/w; primrose £1,499  
1967 JAGUAR 'E'-type drophead coupé. Carmen red. H. & S. tops, radio, chrome w/w £1,649  
'F' regd. JAGUAR 'E'-type fixed-head coupé. Eye-catching in red with beige leather. Radio, heated rear window, chrome w/w..... £1,799  
'G' regd. JAGUAR 'E'-type, Series II, fixed-head coupé. Metallic blue with black. Heated rear window, chrome w/w., radio..... £2,049

1965 MERCEDES 230SL. Quality performance coupé. Automatic, power steering, radio... £2,399  
1966 M.G. Midget. British Racing Green, black interior. Mod. suspension, mag. alloy wheels £499  
'F' regd. M.G. Midget. Excellent example in dark blue with black interior. Fitted w/w. £599  
1954 M.G. TF. True collector's car in exceptional order. Maroon with tan trim..... £549  
1960 M.G.-A. Rare example in this condition. Finished in royal blue. Well kept..... £329  
1964 M.G.-B roadster. Exceptional bodywork in ivory/black leather interior. O/drive and wire wheels..... £549  
1965 M.G.-B roadster. Fitted hard- and soft-tops, radio, wire wheels. Smart red bodywork... £599  
1966 M.G.-B roadster. Excellent in mineral blue with black. Includes o/drive and wire wheels £649

1967 M.G.-B roadster. Low mileage, with overdrive and w/w. Finished in French blue..... £799  
1968 M.G.-B roadster. Fitted hard- and soft-tops. Cosmic alloy wheels, overdrive and radio... £899  
1969 M.G.-B roadster. As new, in red with black. Wire wheels; only 6,000 miles..... £949  
1966 M.G.-B GT. Superb in red with black interior. Extras include wire wheels and radio £799  
1967 M.G.-B GT. Magnificent in mineral blue with black. Overdrive, wire wheels and radio £899  
'F' regd. M.G.-C roadster. White with black interior. Auto. gearbox, radio; one owner... £899  
1965 MORGAN +4. Finished in red with black interior. Full Lawrencetune engine, w/w. £749  
1969 (Nov.) MORGAN 4/4. Four-seater competition model in navy. Wire wheels. Only 1,500 miles..... £1,199

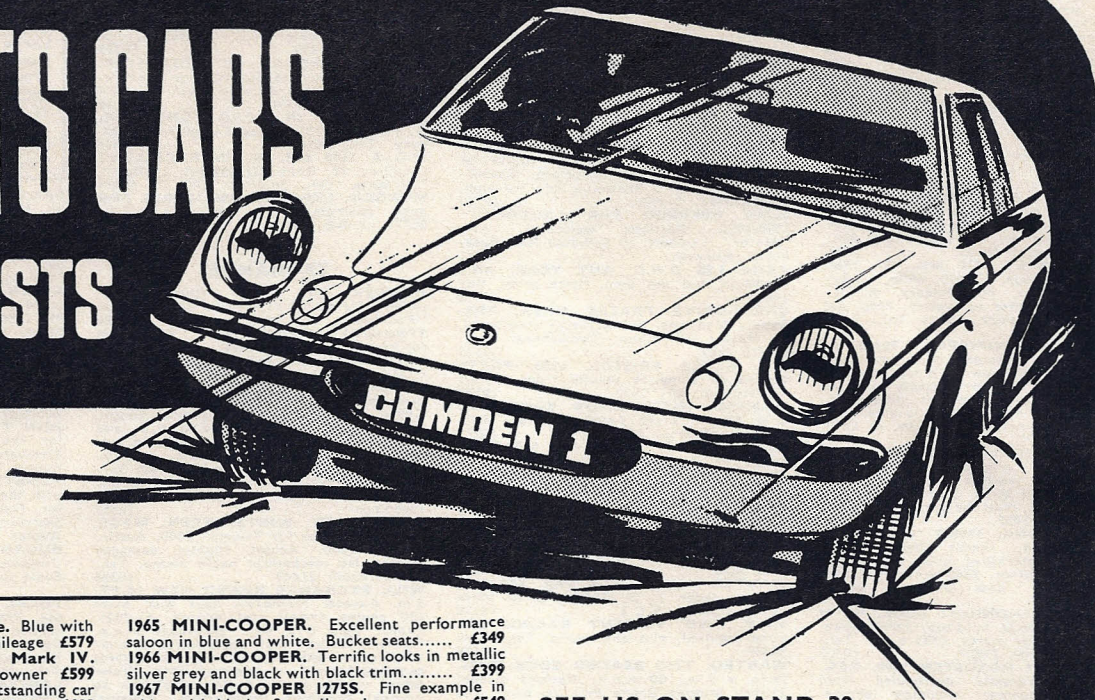


# camden motors limited

WRITE OR PHONE FOR FREE ILLUSTRATED LIST



# SPORTS CARS SPECIALISTS



**ANY  
PART  
EXCHANGE**

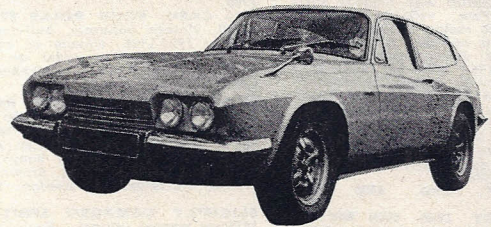
'F' regd. **AUSTIN HEALEY Sprite**. Blue with black int., w/w., radio, tonneau; low mileage... **£579**  
**1968 AUSTIN HEALEY Sprite Mark IV**. Red with black int. Wire wheels. One owner... **£599**  
**1965 AUSTIN HEALEY 3000**. Outstanding car in navy. Hard- and soft-tops, w/w., o/drive... **£699**  
**1965 AUSTIN HEALEY 3000**. Low mileage. White with black int. O/d., wire wheels... **£749**  
**1966 AUSTIN HEALEY 3000**. Unmarked in British Racing Green with black interior. Fitted push-button radio... **£829**

**1965 MINI-COOPER**. Excellent performance saloon in blue and white. Bucket seats... **£349**  
**1966 MINI-COOPER**. Terrific looks in metallic silver grey and black with black trim... **£399**  
**1967 MINI-COOPER 1275S**. Fine example in white with black. Stage II engine... **£549**  
**1968 MINI-COOPER**. Connaught green with grey trim. Records only 12,000 miles... **£549**  
**1968 MINI-COOPER**, Mark II model in duo beige and white with black trim. Reclining seats, radio, fog and spot lamps... **£579**

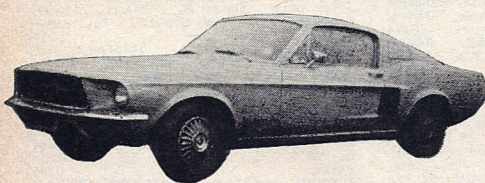
**SEE US ON STAND 30  
AT THE SPECIALIST  
SPORTS CAR SHOW**

**1964 ASTON MARTIN DB5**. A superb example in Roman purple; wire wheels, heated rear window and radio... **£1,499**  
**1963 DAIMLER SP250**. Rare and very fast example. V8 engine. Metallic grey... **£699**  
**1968 FIAT 124 coupé**. Magnificent car in flame red with black interior. Full 4-seater... **£1,249**  
**1965 Series FIAT 2300S coupé**. Beautiful Ghia styling in metallic dark blue... **£1,099**  
**1967 regd. FORD Mustang saloon**. Automatic transmission, power steering, radio. Metallic silver... **£1,249**  
**1967 FORD Mustang Fastback**. Metallic green with black trim. Automatic transmission, push-button radio... **£1,699**  
**1967 FORD Mustang 7-litre Fastback**. Only one owner and 12,000 miles. Metallic blue... **£2,199**  
**1965 GORDON KEEBLE GT**. Chevrolet 5.4-litre V8. Radio. 28,000 miles. Red... **£1,599**

'F' regd. **HONDA S.800 coupé**. Metallic silver grey with black interior. Includes Webasto sun-roof... **£699**  
**1962 JENSEN 541S**. Beautifully kept example in dark blue with leather int. Auto. Radio... **£799**  
**1964 Series LANCIA 1.8 drophead**. Unmarked bodywork in red with grey trim. Hard-top... **£699**  
**1963 PORSCHE Super 75**. Classic performance car in blue with black interior. Radio... **£849**  
**1966 PORSCHE 912**. No expense spared to maintain this in top class order. Blue... **£1,749**  
**1967 PORSCHE 912**. Outstanding condition in grey with black interior. Mag. alloy wheels. Radio... **£1,999**  
**1966 RELIANT Scimitar GT**. Attractive 2+2 in blue with black interior. O/drive, radio... **£899**  
**1968 RELIANT Scimitar GT**. Extremely well kept example in white with black. Overdrive and radio... **£1,099**



**RELIANT DISTRIBUTORS**



**AMERICAN SPECIALISTS**

**1964 SUNBEAM Alpine GT**. Very nice example in red with black. Overdrive and h/top... **£479**  
**1966 SUNBEAM Alpine**. Fine example finished in blue with black trim. Reclining seats... **£599**  
**1968 SUNBEAM Alpine GT**. Overdrive, hard-top, radio, wire wheels. In red with black... **£819**  
**1965 SUNBEAM Tiger**. V8 engine, giving incredible performance. Equipped h. & s. tops... **£699**  
**1966 SUNBEAM Tiger**. Only 22,000 miles from new, in yellow ochre with black. H. & s. tops... **£749**  
**1967 SUNBEAM Tiger Mark II**. Red with black interior. Hard- and soft-tops, radio, twin spots. Superb... **£1,099**  
**1964 TRIUMPH Spitfire**. Hard- and soft-tops, w/w., quality radio. Blue with black trim... **£429**  
**1965 TRIUMPH Spitfire**. British Racing Green. Wire wheels, Motorola radio... **£449**

**1966 TRIUMPH Spitfire sports roadster**. In white with black trim. Really good example... **£499**  
**1967 TRIUMPH Spitfire Mark III**. Valencia blue with tan interior; w/w., radio... **£599**  
**1968 TRIUMPH Spitfire**. Immaculate in white with black. H/S-tops, w/w. Low mileage... **£699**  
**1961 TRIUMPH TR3A**. Beautiful paintwork in special metallic silver. O/drive and w/w... **£399**  
**1966 TRIUMPH TR4A roadster**. In red with black. Hard-top, overdrive and radio... **£749**  
**1967 TRIUMPH TR4A**. Finished in blue with black. Wire wheels, o/d. and w-rim wheel... **£799**  
**1968 TRIUMPH TR5 roadster**. In navy with black. Includes overdrive, w/w. and radio... **£999**  
**1968 Series VOLVO P.1800S coupé**. Late example in white with red interior. Includes radio and overdrive... **£1,399**

# lake street leighton buzzard beds tel 2041

**OPEN DAILY 9 - 8. SUNDAYS 10 - 4**

