

1958 A.C. Ace Bristol sports. In black with red interior, white hard-top, wire wheels. Very carefully maintained, a fine example. Extensive bills for recent overhaul..... **£799**

1969 ASTON MARTIN DB 'S'. Fitted Vantage engine with manual gearbox, power-assisted steering; an outstanding car in burnt almond with white gold hide interior. Radio and Webasto roof **£4,499**

1969 'H' regd. ASTON MARTIN DB '6', fitted full refrigeration, automatic, power-assisted steering. This really exceptional car, which is finished in silver birch with black hide interior, has covered a genuine mileage of 10,000 in the hands of its one owner and is in superb condition **£3,799**

1969 ASTON MARTIN DB '6'. Another superb car in platinum with red hide interior. Manual with power-assisted steering, radio and heated rear window. Well above average..... **£3,599**

1967 'F' ASTON DB '6'. First registered 22/12/67. A first class example in metallic silver grey with black interior, radio, chrome wire wheels; one owner only from new..... **£2,699**

1966 ASTON DB '6' Vantage. In silver birch with deep blue hide interior, triple lug chrome wire wheels, Sundym glass, sports fog lamps fitted; records only 42,000 miles..... **£2,099**

1963 ASTON DB '4' Vantage. Unusually fine car in black cellulose with red hide interior and fitted chrome wire wheels. Very much above average..... **£1,299**

1965 AUSTIN HEALEY Sprite, in primrose with black interior, hard- and soft-tops, wire wheels, tape deck. Delightful car ... **£499**

1967 AUSTIN HEALEY Sprite, in British Racing Green with black interior, tonneau cover, knock-on wheels..... **£599**

1968 AUSTIN HEALEY Sprite, in blue with black trim, special fibre-glass bonnet; very well maintained; wire wheels..... **£679**

1967 registered AUSTIN HEALEY 3000 Mk. II with Mk. III features. In green with red interior, wire wheels, radio, etc. **£699**

1964 AUSTIN HEALEY 3000, in blue with matching blue interior. Push-button radio, knock-on wheels. A fine example of this model. (Illustrated) **£699**

1970 regd. BEACH BUGGY (Vulture), in aubergine, Custom seats in biscuit colour, radio, extra wide tyres, roll bar..... **£679**

1967 BOND Equipe. Finished in beige with black interior, fitted sunshine roof. (Illustrated)..... **£499**

1961 DAIMLER SP250, maroon, tan interior; detachable hard-top, wire wheels; splendid-looking example of this super motor car..... **£499**

1965 FERRARI 275 GTB sports, in red with black interior, 5-speed gearbox, fitted push-button radio; superb motor car..... **£2,599**

'H' registered FORD Mustang saloon, in metallic green, duotone green interior. Automatic transmission, power steering, push-button radio **£1,399**

FORD Mustang drophead in white with black trim, V8 engine, automatic, right-hand drive, push-button radio; very nice car..... **£1,199**

FORD Mustang fastback, in beige with black interior, push-button radio **£999**

1970 FORD Mustang fastback, in white with red interior, automatic, power-assisted steering, push-button radio. A host of extras makes this car a must..... **£2,699**

1968 GILBERN Genie coupé, in brown with black interior, fitted overdrive, magnesium wheels, push-button radio..... **£1,099**

1965 GORDON KEEBLE, in metallic green with black hide interior, fitted pile carpeting, knock-on wheels, push-button radio..... **£1,299**

1964 GORDON KEEBLE, in white with contrasting black interior, push-button radio, twin spotlamps; only 45,000 recorded miles..... **£1,299**

1967 HONDA S800 coupé, in Bahama yellow, with black interior **£499**

1967 HONDA S800 coupé, in fern green with black interior. Trim small sports coupé with lots of zip **£499**

1958 JAGUAR XK150 fixed-head coupé, in British Racing Green, with matching green interior, wire wheels, spot lamps **£499**

1966 JAGUAR 'E'-Type fixed-head coupé, in white with black interior. Fitted radio, chrome wire wheels, heated rear window. (Illustrated) **£1,299**

1967 JAGUAR 'E'-Type f.h.c., in red with beige interior, chrome wire wheels, push-button radio **£1,499**

1969 JAGUAR 'E'-Type +2, in blue with matching interior, chrome wire wheels. First class example **£1,999**

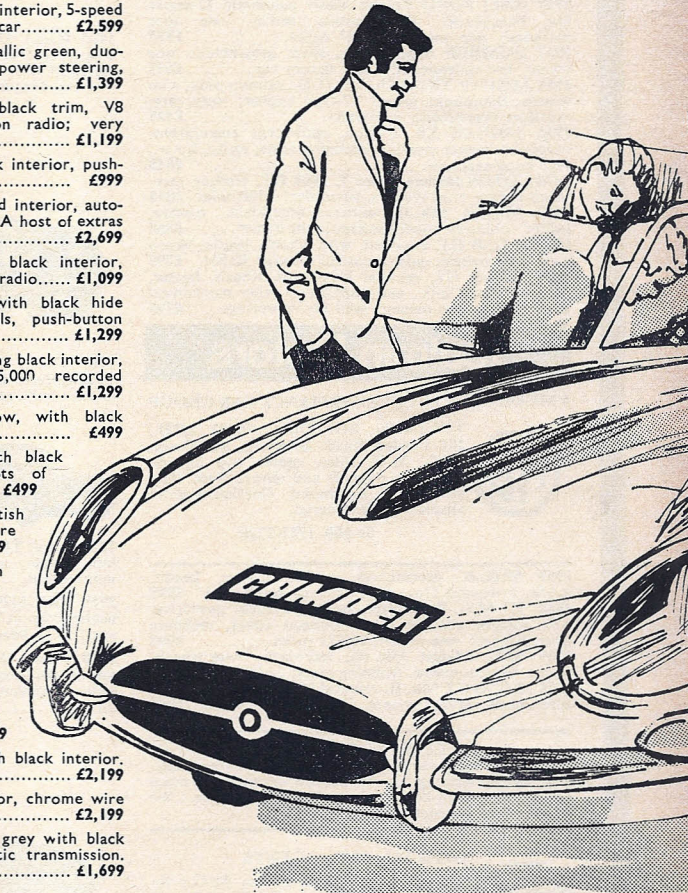
1970 JAGUAR 'E'-Type +2 f.h.c., in white with black interior. Fitted chrome wires, h.r.w.; specimen..... **£2,199**

1970 JAGUAR 'E'-Type, white with black interior, chrome wire wheels, push-button radio. Superb example..... **£2,199**

1966 JENSEN CV8 fixed-head coupé, in silver grey with black hide interior. Fitted push-button radio, automatic transmission. A really fine example..... **£1,699**

CAMDEN SPORTS CARS....

THE EQUAL OF ANY IN THE COUNTRY!



CAMDEN SPORTS CARS

Lake St. Leighton Buzzard, Beds. Tel. 05253 2041(5lines)

1968 (regd. 1970) **LAMBORGHINI** Muira, right-hand drive. In white with black trim. A most impressive example..... £5,500

1964 **LANCIA** 1.8 Flavia, in blue with beige interior; really excellent value for money..... £799

1967 **LANCIA** Fulvia coupé, in blue with cream interior. Delightful motor car..... £1,049

1969 **LOTUS** Super 7 Series III, 1600 cross-flow engine. One owner; in very good order. Red. Low mileage..... £799

1970 **ELAN** fixed-head coupé. Special equipment. White with black trim, radio, heated rear window, tinted glass. One owner..... £1,449

1970 **ELAN** +2S, 3,000 miles. 'J' registered. Radio, heated rear window. Burnt sand. One owner; genuine car..... £1,999

1969 'H' regd. +2S, in Bahama yellow with all the extras. Radio, tinted glass, heated rear window, Webasto roof..... £1,899

1968 +2S **ELAN**, in blue, radio, chrome wire wheels; genuine low-mileage one-owner car..... £1,299

1969 'H' **ELAN**, Special Equipment, Spring specifications. Yellow and black; extra high performance; 3.5 rear axle..... £1,199

1968 **ELAN** drophead coupé, in blue, black interior, fitted radio, electric windows, etc. (Illustrated)..... £1,149

1966 Series **ELAN** fixed-head coupé, chrome bumpers, radio, in pearl black. Original ex-Lotus works car. (Illustrated)... £899

1969 Model **EUROPA**, white and black, radio, wheel trims, servo brakes, electric windows. (Illustrated)..... £1,099

Many other used Lotus models in stock.

Frustrated order, New **EUROPAS** now in component form..... £1,449

One only +2 **ELAN**, component form, delivery within two days.

LOTUS +2S, in white/burnt sand, from stock.

Special Equipment fixed-head coupé and drophead coupé **ELANS**. Two days delivery at pre-increase prices.

1968 **MARCOS** 1600 GT, Bahama yellow, black interior, mag. wheels, sun-roof. You could be the proud owner of this car... £1,449

1969 **MARCOS** 3-litre, dark blue with black interior, fitted overdrive..... £1,499

1969 **MINI-MARCOS**, British Racing Green, black interior. Really well maintained and looked after..... £599

1967 **MASERATI** Mistral convertible. Really beautiful car in metallic silver, black hide interior. Detachable hard-top, 5-speed gearbox, push-button radio, lots of luxurious extras..... £2,999

1962 **MERCEDES** 300SL sports roadster, in green with red hide interior..... £2,499

1967 **M.G.** Midget, in green with black interior, fitted push-button radio, wire wheels. (Illustrated)..... £579

1966 **M.G.-B**, in special metallic maroon, with black hard- and soft-tops. Cosmic magnesium wheels, push-button radio, overdrive fitted..... £749

1967 **M.G.-B**, in blue with black interior, wire wheels, radio, overdrive..... £799

1968 **M.G.-B**, in white, contrasting black interior, wire wheels, radial tyres, overdrive, wing mirrors, burglar alarm. (Illustrated) £949

1969 **M.G.-B**, in white with black interior, hard-top, luggage rack, wire wheels, push-button radio..... £1,069

1967 **M.G.-B GT**, in red with black trim, radio, overdrive, wire wheels..... £899

1968 **M.G.-B GT**, in mineral blue with black interior, sunshine roof, wire wheels, radio..... £1,049

1969 **M.G.-B GT**, in black with red trim, overdrive, chrome wire wheels; only 19,000 recorded miles..... £1,099

1969 **M.G.-B GT**, in primrose with black interior, overdrive, wire wheels and radio..... £1,199

1968 **M.G.-C GT**, automatic, in mineral blue with black trim, wire wheels; excellent buy..... £999

1969 **M.G.-C GT**, in red with black trim, push-button radio, overdrive..... £1,149

1950 **MORGAN** 4/4 four-seater, in red, black interior and hood. (Illustrated)..... £329

1969 **MORGAN** +8, in yellow/black interior, magnesium wheels, twin spots; barely 12,000 miles..... £1,499

1969 **MORGAN** Plus 4, in blue/black trim, reflective plates, side-screens, luggage rack; 12,000 recorded miles; spot and fog lamps, wire wheels..... £1,299

1970 **MORGAN** +8, in tangerine, 9,000 recorded miles. Tonneau cover and magnesium wheels..... £1,599

1967 **PORSCHE** Super 90 coupé. In tangerine with dark tan interior, fitted radio, sun-roof; delightful motor car..... £899

1967 **PORSCHE** 912 coupé. In red with black interior. One owner, 44,000 recorded miles. Push-button radio, electric aerial..... £1,799

1968 Series **PORSCHE** 912. Finished in burgundy with light tan interior, Blaupunkt radio..... £1,949

1970 **PORSCHE** 911E fixed-head coupé. Signal orange with black interior. Electric windows, electric sunshine roof, fitted radio; under 10,000 miles..... £4,150

1967 **RELIANT** Scimitar 3-litre, in bronze with black interior, push-button radio. Fitted overdrive; very fine example..... £999

1968 **RELIANT** Scimitar 2.5 GT, in dark blue, fitted overdrive, push-button radio..... £1,099

1969 **RELIANT** Scimitar GTE, in red with black interior, overdrive, push-button radio..... £1,699

1970 **RELIANT** Scimitar GTE, in white with black interior heated rear window, radio, overdrive..... £1,949

1965 **SUNBEAM** Alpine GT fixed-head coupé, in blue with matching interior, fitted overdrive. (Illustrated)..... £599

1967 **SUNBEAM** Alpine sports GT, in white with contrasting black trim, radio, overdrive..... £649

1966 **SUNBEAM** Tiger, in white with red interior, hard- and soft-tops push-button radio..... £699

Choice of five **SUNBEAM** Tigers, 1965/66.....From £649

1969 **TRIUMPH** TR6, in yellow with black interior, hard-top, push-button radio..... £1,449

1969 **TRIUMPH** TR6 sports. Red with black interior, wire wheels, push-button radio, overdrive; 11,152 recorded miles..... £1,399

1969 **TRIUMPH** TR6. In white with contrasting black interior, wire wheels, overdrive, tonneau cover, push-button radio... £1,499

1968 **TRIUMPH** TR5 PI. In blue with black interior, overdrive, wing mirrors, Waso lock..... £1,099

1968 **TRIUMPH** TR5, in blue with black interior, push-button radio, fitted overdrive..... £1,029

1966 **TR4A**. In red with black trim, overdrive, push-button radio very fine car. (Illustrated)..... £799

1963 **TR4 DOVE** coupé, in red with black interior, wire wheels, overdrive. Superb-looking car. (Illustrated)..... £599

1963 **TRIUMPH** TR4, in red with black interior, wire wheels, overdrive..... £599

1969 **TRIUMPH** GT6, in Valencia blue, heated rear window wire wheels, overdrive..... £1,049

1968 **TRIUMPH** GT6, in red with black interior, wire wheels, push-button radio, overdrive..... £849

1967 **TRIUMPH** GT6, in blue with black interior, push-button radio. Very lovingly cared for..... £749

1970 **TRIUMPH** Spitfire, in Valencia blue, tonneau cover, overdrive push-button radio..... £849

1969 **TRIUMPH** Spitfire, Valencia blue with black interior, tonneau cover, wire wheels, wing mirrors. Nice car..... £799

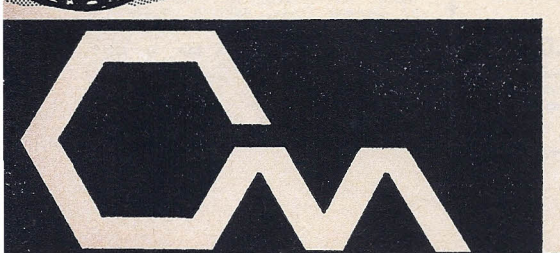
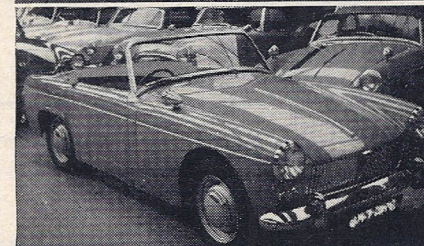
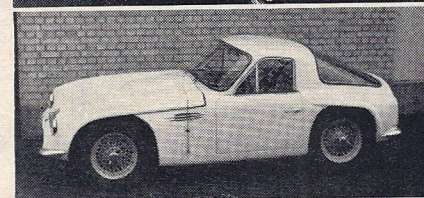
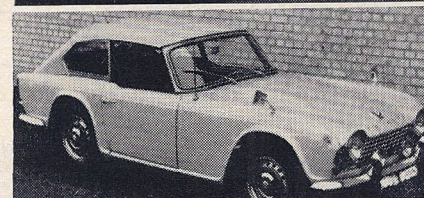
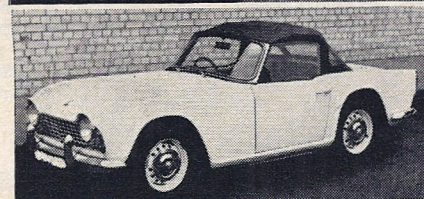
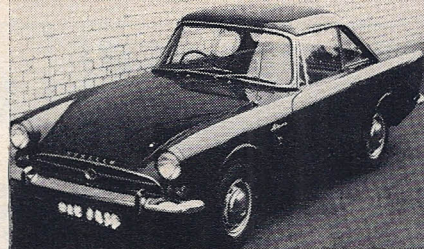
'J' Registered **SPITFIRE** Mk. III, in Wedgwood blue with dark blue interior. A very fine car..... £699

1968 **TRIUMPH** Spitfire, in royal blue with matching trim, detachable hard-top..... £699

1968 **TRIUMPH** Spitfire, in white, push-button radio, wire wheels. (Illustrated)..... £649

1966 **TRIUMPH** Spitfire, in green, black trim, push-button radio. Very clean car..... £549

1970 **T.V.R.** Vixen, in orange with black trim. One owner; very well kept. (Illustrated)..... £1,299



Please send me a copy of your current stock list.

NAME _____

ADDRESS _____

INTRODUCE A FRIEND, IF HE BUYS YOU RECEIVE £10.

NAME _____

ADDRESS _____

Post to:—Camden Motors, Lake St. Leighton Buzzard. Beds