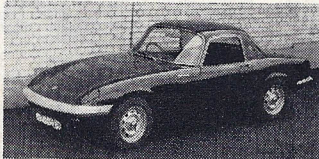


CAMDEN sports cars

"from a selection of over 150"



1968 ALFA ROMEO 1750 GT sports coupé, in white, brown interior; radio. Well kept..... £1,499

1968 Regd. ALFA ROMEO GTV f.h. coupé, in white, contrasting black interior..... £1,049

1966 Regd. ASTON MARTIN DB5, in green, Sundym glass, wire wheels, radio..... £1,799

1965 ASTON MARTIN DB5. Silver grey, navy hide interior. Radio, wire wheels..... £1,599

1963 ASTON MARTIN DB4 Vantage, in black, red hide interior. Very fine condition..... £1,099

1967 AUSTIN HEALEY Sprite Mk. IV, in white, black trim. Radio, hard-top. Ideal..... £529

1969 AUSTIN HEALEY Sprite. Royal blue, black trim. Wire wheels, hard-top, radio..... £729

1962 AUSTIN HEALEY 3000 sports, in ice blue and white, black trim. Overdrive..... £449

1967 Regd. AUSTIN HEALEY 3000, in B.R.G. Mk. II model. Red interior. Popular sports..... £699

1966 AUSTIN HEALEY 3000, in navy blue, black leather interior, radio and o/drive; genuine low mileage £829

1970 AUSTIN HEALEY Sprite, in white, with detachable hard-top, wire wheels, radio; one owner..... £799

1966 FIAT 1500, R.H.D. convertible. Wedgwood blue, beige interior; 5-speed gearbox..... £699

1968 FIAT 124 coupé. Red, black int. 5-speed g/box, radio. Attract. car £1,099

1968 FIAT 124 sports coupé. White with cont. black interior, h.r.w., 5-speed box..... £1,279

1965 FORD Mustang convertible. Jag. red. Auto. Comfortable 4-seater car with radio..... £899

1966 FORD Mustang. Green. Automatic. Black trim. Radio. In remarkable condition..... £1,149

1968 GILBERT Genie. Powder blue, black trim, radio and overdrive. First class order..... £1,149

1964 GORDON KEEBLE. White, black trim. Radio. Lots of power from V8 engine..... £1,299

1969 HONDA S800 sports coupé. Silver blue, black trim. Very fast small coupé..... £629

1968 series JAGUAR 'E'-Type drophead. White with duo-tone blue interior. Fitted radio..... £1,499

1968 JAGUAR 'E'-Type 2+2 coupé. Met. silver blue, black interior, radio, chrome wire wheels..... £1,699

1964 LANCIA Flavia sports coupé. Sky blue, grey cloth interior. Remarkable condition..... £799

1968 LANCIA Fulvia f.h. coupé. Monza red, white interior. Fitted sun-roof and radio..... £1,249

1968 LOTUS Elan f.h. coupé. White with black trim, radio. Fast sports..... £1,049

1967 LOTUS Elan f.h. coupé. Red, black trim, radio. Fine example. Well maintained..... £949

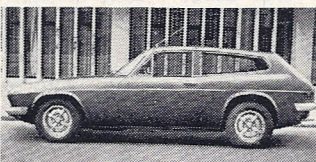
1968 LOTUS Elan f.h. coupé. Burnt sand. S/E model. Very attractive £1,199

1970 LOTUS Elan S4 GT. Special equipment model in yellow, radio; 7,500 miles..... £1,449

NEW ELAN Sprints, F/h coupés and D/h coupés in Kit form for earliest delivery.

1969 LOTUS Europa f.h. coupé. Powder blue, black trim. Radio, h.r.w., electric windows..... £1,199

NEW EUROPA in Bahama yellow, and Kit form EUROPA in red.



1969 LOTUS Elan +2S. White, black trim. Radio, h.r.w., knock-on wheels..... £1,799

ALSO similar models in green and black.

NEW LOTUS Elan +2S, in white, royal blue and burnt sand.

NEW LOTUS Elan +2S 130, in red.

1965 M.G. Midget, in white, black trim, h/top; 1 owner, gen. mileage £449

1967 M.G. Midget, in B.R.G., black hard-top, wire wheels, radio, spot and fog lamps..... £529

1969 M.G. Midget, blue with black trim. Radio. One-owner car in excellent condition..... £699

1966 M.G.-B roadster, in B.R.G. with radio, o/drive, h/top, alloy wheels £679

1967 M.G.-B roadster, in grey, fitted o/drive, radio. Very popular mod. £799

1968 M.G.-B sports, in metallic blue, black interior and hood; overdrive and wire wheels..... £899

1969 M.G.-B sports roadster. White with black trim. Overdrive, wire wheels, radio, hard-top..... £1,029

1970 M.G.-B sports. Bahama yellow. One-owner car with Bermuda hard-top, radio, wire wheels..... £1,249

1968 series M.G.-B GT. Dove grey, red trim. Radio, overdrive, wire wheels. Remarkable condition £879

1969 M.G.-B GT. Royal blue, black interior. Overdrive, wire wheels. Fine example of this popular car..... £1,199

1970 M.G.-B GT, in Bahama yellow. Sunshine roof, radio, overdrive, wire wheels, h.r.w., slot stereo..... £1,399

1969 M.G.-C GT, white with black int. O/d., w/w., radio. Very fine ex. £1,099

1969 MORGAN +4, in B.R.G., black int., wire wheels; 16,000 miles £1,149

1969 MORGAN 4/4 sports, 4-str., in navy blue, blk. trim and sidescrns, radio, w/wheels, luggage rack... £1,249

1967 PORSCHE 912 coupé, in bright red with black interior; radio. Very fast sports coupé..... £1,799

1968 RELIANT Scimitar 2.5 sports in met. blue, black trim. Radio..... £999

1970 RELIANT Scimitar 3-litre, in sand with black trim. Radio, overdrive, h.r.w., sunshine roof... £1,699

AS RELIANT DISTRIBUTORS WE HAVE A STOCK OF GTEs FOR EARLIEST DELIVERY

1964 SUNBEAM Alpine, Auto. GT f.h. coupé, in blue. Radio..... £479

1967 SUNBEAM Alpine. Green, with hard-top, black interior. Radio, wire wheels, overdrive..... £649

1968 SUNBEAM Alpine sports. Blue with black interior and hood. Fitted overdrive..... £749

1965 SUNBEAM Tiger sports coupé, in red, black interior. Hard-top, radio. V8 engine..... £599

1966 TRIUMPH Spitfire, white, detachable hard-top, wire wheels, radio. Attractive car..... £499

1967 TRIUMPH Spitfire Mk. III, in Forest green, black interior and hood. Hard-top. Ideal first sports car £549

1968 TRIUMPH Spitfire, in red with black trim. Detachable hard-top, radio, wire wheels; one owner £639

1969 TRIUMPH Spitfire, blue, black hood. Wire wheels. Fine example £749

1969 TRIUMPH Spitfire, white, black interior. Overdrive, radio; one owner. Genuine mileage..... £749

1967 TRIUMPH GT6. Green, black trim. Wire wheels, radio, overdrive; one owner, 32,000 rec. miles... £699

1968 TRIUMPH GT6, Mk. II. Jasmine, black interior. Overdrive, wire wheels, radio..... £849

1966 TRIUMPH TR4A, in white. Fitted radio, overdrive, wire wheels. Similar in red..... £699



1969 TRIUMPH TR6 roadster, in B.R.G., black interior. Fitted radio, wire wheels..... £1,299

1969 TRIUMPH TR6 sports, in white, black interior. Overdrive, wire wheels, radio..... £1,349

MERCEDES-BENZ

300SL, 1962, roadster, in forest green with red hide interior. Quite exceptional..... £2,495

230SL Automatic, 1965. Finished in dark blue, power steering, hard-top. Beautiful condition..... £2,395

250SE Automatic saloon, 1967. P.A.S., radio. Green, tan int. £2,195

250SE saloon, 1967. Manual, radio. Wedgwood blue with matching interior..... £1,795

FITZROY HOUSE

New : B.M.W.s

2800 Automatic, power steering. Atlantic blue.

2500 Manual. Agave green.

2000 Automatic. Granada red.

Used : B.M.W.s

2800 Manual, power steering, 1971. Radio. Finished in Baikal blue metallic. First class condition..... £3,545

2800 Automatic, 1970, with radio, finished in Granada red with black interior..... £2,995

2002 Automatic, 1970, with radio, finished in white with contrasting black interior... .. £1,845

1800 saloon, 1970, red, black trim..... £1,595

1600 Manual, 1970, finished in red. This one-owner car records only 5,000 miles..... £1,495

2002 coupé, Manual, red, black trim, radio..... £1,445

2002 Manual, 1968, finished in sand with tan interior..... £1,295

ROLLS-ROYCE

Silver Cloud, 1964, 2-door saloon by H. J. Mulliner-Park Ward. Dawn blue and shell grey..... £4,795

ASTON MARTIN

DBS, 1969, Vantage, Manual, power steering, Webasto roof, radio. Finished in burnt almond with white gold hide interior..... £3,995

DB6, 1969, Automatic, full Coilaire refrigeration, power steering, radio. Certified 10,000 miles. Finished in silver birch with black hide interior..... £3,795

DB6, 1969, Manual, power steering, radio. Finished in platinum white with red hide interior..... £3,595

DB6, 1967, Manual, radio, slot stereo. One owner. Finished in silver birch with blue hide interior... £2,695

DB6 Vantage, 1966, Manual, silver birch, black hide..... £2,095

JAGUAR

2+2 Manual, 1970. Radio, Webasto roof, chrome wire wheels. Finished in white with black interior... £2,495

Fixed-head coupé, 1970. Radio. Finished in Carmen red with black interior..... £2,295

Drophead coupé, 1969, with hard-top, radio, chrome wire wheels. Finished in white with contrasting black interior..... £1,845

TRIUMPH STAG

Choice of TWO :

Saffron yellow. Automatic. Hard-top.

Laurel green. Automatic. Hard-top.



OPEN DAILY INCLUDING SUNDAYS

TELEPHONE LEIGHTON BUZZARD 3670

Many, many, others to choose from.
Phone for details or illustrated leaflet

LAKE STREET LEIGHTON BUZZARD
BEDFORDSHIRE. Tel. 2041 OPEN DAILY 9-8
SUNDAY 10-6