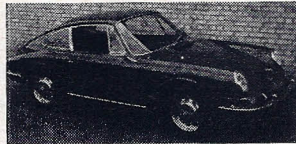
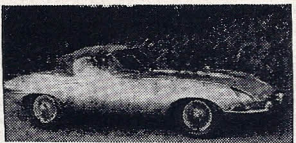


# CAMDEN sports cars

"from a selection of over 150"



**1968 ALFA ROMEO 1300 GT Junior** coupé, red with black. Wide-rim wheels. A very tidy 2+2 GT... **£1,249**  
**1965 ASTON MARTIN DB5 Vantage**, in silver grey with black hide upholstery. Fitted radio, wire wheels... **£1,649**  
**1966 AUSTIN HEALEY Sprite**. Radio and heater. Beautiful little sports car. Green with black trim **£449**  
**1967 AUSTIN HEALEY Sprite**, in red with black interior trim. Anti-roll bar and tonneau cover... **£529**  
**1967 B.M.W. 1800 TI sports saloon**. Good performance and full 4-seater, bodywork and boot space. Red with grey interior... **£899**  
**1967 BOND Equipe**. Based on the popular Triumph Herald, but with stylish rot-proof fibreglass bodywork. This example, in blue with black trim, is worth inspection... **£449**  
**1965 FIAT 2300 'S' coupé**, in metallic golden sand with red upholstery. An outstanding locking car... **£899**  
**1966 FIAT Cabriolet 2+2 convertible**. R.H.D., 5-speed gearbox, radio and heater. Attractive and unusual roadster. Blue with beige interior **£699**  
**1968 FORD Lotus Cortina 2-door sports saloon**. Lotus Twin-cam engine in familiar Cortina shape. White with black upholstery... **£849**  
**1966 FORD Mustang Fastback**. White with black interior. Auto. Radio, h.r.w. Good-looking car **£1,049**  
**1969 Regd. FORD Mustang GT**, metallic dark green with white flash. Auto., P.A.S., radio, slot stereo **£1,799**



**1963 GILBERN GT**. Hand-built to a high standard. Stylish 2+2 GT bodywork and reliable M.G. mechanics. Dark green... **£599**  
**1966 GILBERN GT 1800**. Red with black trim, wire wheels, spots... **£749**  
**1964 GORDON KEEBLE 2+2 GT**. Magnificent car, just resprayed in red. Great performance from Chevy-Corvette engine... **£1,399**  
**1969 HONDA S.800 GT Fastback**. Superb Japanese engineering has produced a GT in miniature. Good performance. Duo-tone gold/white with black interior trim... **£699**  
**1967 JAGUAR 'E'-Type d.h.c.**, '68 series. White with duo-tone blue interior. Fitted radio... **£1,499**

**1966 JAGUAR 'E'-Type 2+2**, in green with matching trim. All the 'E'-type advantages with two occasional seats in the back. Performance car for the family man... **£1,299**  
**1967 JAGUAR 'E'-Type roadster**. Attractive in red with chrome wire wheels and beige upholstery... **£1,499**  
**1965 LOTUS Elan drophead**, in red with black interior trim. Heater **£699**  
**1967 LOTUS Elan +2**, fitted with sun-roof and reversing lights. Radio and heater. Metallic light blue with black... **£1,399**  
**1968 LOTUS Elan f.h.c.**, Special Equipment model, in red with black. Radio... **£1,199**  
**1969 LOTUS Elan +2S**, in red with black trim. H.R.W., radio, electric aerial... **£1,949**  
**1970 LOTUS Elan S/E, fixed-head coupé**. Sparkling performance and luxuriously equipped interior. This car is finished in red with black upholstery... **£1,399**



**NEW LOTUS Elan Sprints—F.H. coupé and D.H. coupé in Kit form for earliest delivery.**

**NEW LOTUS Europa mid-engine GT**, in red with black interior. Kit form.

**1969 MARCOS 3-litre f.h.c.** Terrific performance and first-class roadholding. Dark blue with black trim. **£1,499**

**'H' Regd. MARCOS 3-litre**. Superb order in bright yellow with black trim. Fitted overdrive. Genuine 14,000 miles. Mag. wheels, radials, usual sun-roof, etc... **£1,599**

**1967 M.G. Midget**, in tartan red with black trim. Radio, rev. lamps, hard-top... **£539**

**1968 M.G. Midget**, in B.R.G., with wire wheels, tonneau cover and Pirelli tyres... **£649**

**1967 M.G.-B roadster**, in blue with matching trim. Fitted with radio, heater, overdrive... **£849**

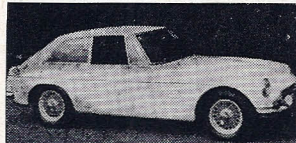
**1967 M.G.-B roadster**, similar to the above car, but with hard- and soft-tops, wood-rim wheel, wires. Blue... **£899**

**1968 M.G.-B sports**, in green with black interior. Wire wheels and overdrive... **£899**

**1966 M.G.-B coupé**, with overdrive, radio and heater. Very smart in white with black... **£799**

**1967 M.G.-B GT**, with many extras, including special seats, radio, wires, overdrive, etc. Finished in grey with red trim... **£949**

**1968 M.G.-B GT**. Fashionably finished in yellow with black trim. Wires, overdrive, radio, air horns... **£1,049**  
**1969 M.G.-B GT**, in blue with black. Fitted radio. Sports performance, saloon comfort... **£1,049**  
**1970 M.G.-B roadster**, with o/drive, power brakes, wire wheels, etc. Flame red bodywork with black trim... **£1,249**



**1969 M.G.-C GT coupé**, 3-litre power and traditional M.G. roadholding. White with black. Wires, radio **£999**  
**1969 MORGAN +8 sports**, 3½-litre V8 engine. Terrific acceleration and Morgan 'Hand-built' quality. Orange with black... **£1,499**  
**1967 PORSCHE 912 coupé**. 'They won at Le Mans again this year!' First class German engineering. Red with black trim. Radio... **£1,799**

**1965 RELIANT Scimitar coupé**, with overdrive, wire wheels, radio and heater. A tidy car in white with black upholstery... **£799**

**1967 RELIANT Scimitar GT coupé**, with overdrive and radio. Exeter green coachwork with black interior... **£999**

**1969 RELIANT Scimitar GTE**. Choice of two cars, both with radio, o/drive, h.r.w. Sports performance and estate car luggage space... **£1,799**

**NEW RELIANT Scimitar GTE 3-litre**, in Caribbean green, with overdrive. Immediate delivery.

**1967 SUNBEAM Alpine GT**, with o/drive and heater. Very smart in dark blue with black interior... **£699**

**1968 SUNBEAM Alpine sports**, in blue with black trim. Fitted heater and overdrive... **£769**

**1966 SUNBEAM Tiger sports**. Stylish and roomy sports car with V8 engine. Hard-top. Red with black. **£799**

**1966 TRIUMPH Spitfire sports**. Attractively finished in blue with blue trim and complete with hard-top **£549**

**1967 TRIUMPH Spitfire** with hard-top, in green with black trim. 'Nippy' little sports car... **£599**

**1967 TRIUMPH Spitfire**, in blue with blue trim. Nice example of this quick and economical small sports car... **£549**



**1968 TRIUMPH Spitfire**, in red with black interior. Heater, hard-top. Most attractive car... **£649**

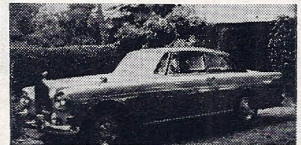
**1968 TRIUMPH Spitfire**, with overdrive, wire wheels and heater. Blue with blue trim... **£699**

## FITZROY HOUSE

Cars of Distinction

B.M.W.

New & Used always in stock.



**ROLLS-ROYCE Silver Cloud III** by Mulliner-Park Ward. Two-door saloon—1964. This superb car is finished in shell grey over dawn blue... **£3,795**

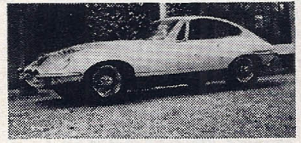
**BENTLEY S2 4-door saloon**. Choice of two. One in two-tone green, registered 1960; the other 1961, in two-tone grey... From **£1,395**



**FERRARI 275 GTB, 1966**. This outstanding car is finished in red with black hide interior. Five-speed manual gearbox, radio and h.r.w., go towards making this a very desirable vehicle... **£2,495**

**230SL MERCEDES, 1965**. Probably the finest for sale in the country. Auto., P.A.S. Hard- and soft-tops, radio. Finished in blue... **£2,195**

**300SL MERCEDES, 1962**, in B.R.G. A very fine example of this rare car... **£2,250**



**F.H.C. 'E'-Type, 1970**, finished in white, black hide interior. Specification includes radio and chrome wire wheels... **£2,295**

**2+2 'E'-Type, 1970**, in silver blue, blue interior. Radio, h.r.w., chrome wires; 11,000 recorded miles **£2,495**

This is only a small selection of the cars in our stock. If the car you require is not shown here, please telephone **05253 - 3670**

FITZROY HOUSE

Lake Street,  
Leighton Buzzard,  
Bedfordshire.

Many, many, others to choose from.  
Phone for details or illustrated leaflet

**LAKE STREET LEIGHTON BUZZARD  
BEDFORDSHIRE. Tel. 2041** OPEN DAILY 9-8  
SUNDAY 10-6