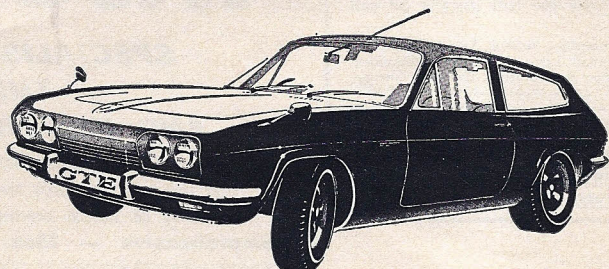


# THE CHEQUERED FLAG



**RELIANT SCIMITAR GTE.** Examples of these fine cars are immediately available for your examination and trial. We will be very pleased to demonstrate one of these outstanding four-seater *Gran Turismo Executive* cars at your home or office, whichever is the more convenient. The GTE with the 3-litre V6 Zodiac unit has either Automatic Transmission or Manual gearbox with overdrive. Earliest possible delivery with choice of colours from the **LEADING RELIANT DISTRIBUTORS.**

**ASTON MARTIN DB6,** in opalescent blue with blue leather, fitted 'Vantage' unit with Webers, chrome wire wheels with triple-eared hubs and XAS tyres, 5-speed gearbox, electric windows, Selectaride, Radiomobile, etc. 1966. **£2,295**

**JAGUAR 'E'-Type, 1967, 4.2 roadster** with detachable hard-top. Carmen red/black trim, chrome wires, HR-SPs, Blaupunkt, luggage rack, soft-top, spot, etc. **£1,565**

**LOTUS Elan Plus Two.** Two 1968 examples, burnt sand or red, both black trim, radio, G800s, electric windows, etc. **£1,365**

**PIPER GTT, 1970.** One-owner example of this futuristic GT car. Lime green with black trim, mag. wheels, G800s, tinted glass. **£1,365**

**LOTUS Europa, 1969, S2,** unmarked red, HR-SPs, radio, leather wheel, electric windows. Good value at **£1,295**

**M.G.-B GT Mk. II.** Two 1969 cars, white or B.R.G., both overdrive, wires (one chromed), radio, Cints., and mirrors. **£1,165**

**M.G.-C.** Choice two one-owner 1969 roadsters, mineral blue or red, both overdrive, wires, radio, leather wheel, twin spots, etc. **£1,015**

**RELIANT Scimitar 3-litre GT, 1967,** golden sands, with sun-roof, overdrive, radio, Cints. **£995**

**LOTUS Elan S3 drophead,** red with black trim, radio, G800s, etc. 1967. **£965**

**ALFA ROMEO Giulia 1600 GT Veloce, 1967,** in red/black trim, radio, Cints., etc. **£1,195**

Also two Giulia 1300 GT Juniors, one green, one red, both radio, etc. From **£995**

## THE FASCINATING FUN CAR OF THE SEVENTIES THE NEW BOND BUG

SEE IT AND TRY IT! YOU'LL BE AMAZED!

**M.G.-B Mk. III, 1969,** one-owner car, gleaming all black finish, with wires, radio, rack, leather wheel, etc. **£995**

**TRIUMPH GT6 Mk. II,** a one-owner 1969 car in white with black trim, with overdrive, radio, Rostyles, heated rear window. **£965**

**M.G.-B GT.** Choice of two 1967 cars, B.R.G. or Grampian grey, both overdrive, wires, radio, spots, etc. **£885**

**LOTUS Elan S3 fixed-head coupé,** white/red trim, radio, electric windows, leather wheel. 1966. **£865**

**COOPER I275S.** Choice no less than six of these accelerative cars, four with mag. wheels, two with sun-roof, three with full custom interiors, Restall seats, etc., four in special colour schemes. From **£465 to £795**

**VW-PORSCHE.** Special 'J'-regd. car, custom built, Wood & Picket coachbuilt finish in metalescent green/white trim, Porsche 'Super 90' 1,600-c.c. unit, Restall seats, radio, lowered, etc., etc. **£935**

**JAGUAR XK150.** Quite exceptional 1960 3.8-litre drophead coupé, in Carmen red, chrome wires, Cints., Motorola, etc. **£795**

**M.G. Midget 1,275 c.c.** Choice five fine cars, mineral blue, B.R.G., white or yellow ochre, 1967 to 1970. From **£565 to £795**

**M.G.-B roadsters.** Choice six hand-picked cars, red, iris blue, B.R.G. mineral blue various extras, 1965 to 1968. From **£535 to £815**

**SPRIDGETS, 1,098 c.c.** Selection of five well maintained cars, Riviera blue, B.R.G., or red, usual extras, 1964 to 1966. **£395 to £515**

**TR4A.** Choice two excellent 1966 cars, conifer or white, both overdrive, wires, radio, etc. From **£715**

**SUNBEAM Alpine S III,** Wedgwood blue, black trim, and hard-top, with overdrive, soft-top, etc.; far above average. **£395**

**ALFA ROMEO Giulietta 1300 Spider,** just imported so 'J' regd., very pretty in white/red trim. Recent overhaul. **£465**

**LONDON'S LEADING SPORTS CAR SPECIALISTS**

# THE CHEQUERED FLAG ENGINEERING LTD.

548-560 Chiswick High Road, London, W.4 Telephone: 01-995 0022/3