

GOLD SEAL SPORTS CARS

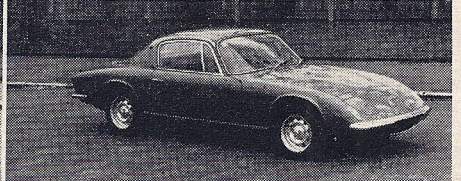
253-255, New Cross Road, London SE14. Tel: 01 639 3204/5/6



LOTUS Elite, 1970. Must be one of the best examples in existence, recorded mileage 1,600. Fitted ZF gearbox, wide wires. Finished in Lotus yellow with black trim. **£1,095**



LOTUS Elan S3 Special Equipment convertible, 1967, in Bahama yellow, fitted B.R.M. tuned engine; exceptionally fast. Radio, new tyres, etc. A very well maintained car, over £300 spent this year. **£1,045**



LOTUS Elan +2, 1968. A one-owner car finished in Carmen red with black trim, radio, etc. Above average example. **£1,345**



LANCIA Fulvia Sport Zagato S, 1969/1970 Model, 'H' Reg. Jamaican silver blue with black trim, 5-p.b. radio. An extremely rare and attractive car. Supplied new by us, having completed under 8,000 miles in the hands of one careful owner. **£1,765**

SELECTION FROM STOCK

ROLLS-ROYCE Silver Cloud 3, 1964. Finished in sand over sable with beige leather upholstery, electric windows, heated rear window. Whole car in superb condition throughout. **£3,675**

MERCEDES 250SE convertible, 1967. Automatic, P.A.S.; two owners. Finished in horizon blue with matching leather trim. **£3,145**

ADAMS PROBE 16. A futuristic-looking GT car finished in Monza red with black trim. A rare chance to purchase. **£2,250**

JAGUAR 4.2 'E'-Type, Series II roadster, 1969. Finished in jet black with red leather interior, fitted radio, etc. A really smooth-looking car. **£1,945**

PORSCHE 912, 1967. A very attractive car finished in Carmen red with black trim, chrome wheels, 5-speed box, radio, etc. **£1,675**

ASTON MARTIN DB5, in B.R.G. with light tan trim, chrome wire wheels, 5-speed box, radio, etc. Much above average. **£1,495**

LOTUS Elan S4 convertible, 1970. Special paint finish in aubergine, knock-on wheels, radial tyres; one owner; supplied new by us. **£1,395**

LOTUS Europa, 1969, 'G' Reg. White with black trim. Radio and Minilite wheels. **£1,395**

TRIUMPH TR6 roadster, 1969. Cirrus white with black trim. Fitted wire wheels, radio, etc. Excellent condition throughout. **£1,365**

JAGUAR 'E'-Type f.h.c., 1966. Finished in Carmen red with black trim. Fitted radio, h.r.w., Abarth exhaust, etc. **£1,275**

LOTUS Elan S4, 1968 (Dec.) Reg., convertible, Special Equipment. Finished in royal blue with black interior, radio, etc. A very nice car in every respect. **£1,185**

FIAT 124 coupé, 1969. A one-owner left-hand drive model, finished in Positano yellow with black trim, radio. **£1,165**

JAGUAR 'E'-Type f.h. coupé 4.2, 1965, in black monotone with red leather trim, chrome wheels. **£1,095**

TR5 roadster, 1968, in cirrus white with black trim. Fitted overdrive, p.b. radio, G800s, etc. **£1,025**

FORD Capri 1600 GT XLR, 1969, 'H' Reg. Metallic lime green with black trim, p.b. radio. **£995**

LOTUS Elan, 1967, S3 coupé, in B.R.G. with black trim. Extras, k/o wheels, servo, radio, etc.; a one-owner car. Recorded mileage 22,330. In very good condition. **£975**

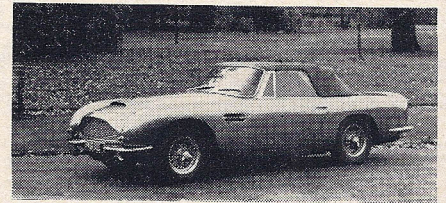
M.G.-B roadster, 1968, in B.R.G. with black trim. Overdrive, wire wheels, radio, folding hood, servo, air horns, Abarth exhaust, etc. A beauty. **£955**

M.G.-B roadster, 1968. Tartan red with black trim. Fitted overdrive, wire wheels, radio. **£925**

LANCIA Fulvia coupé, 1967. Maroon with black trim. A very fast and economical 2/4-seater. Recommended. **£895**

LOTUS Elan, 1966, S3 convertible. Cirrus white with black trim, radio, etc. **£895**

JAGUAR XK150 3.8 'S'-Type, 1960. Dove grey with matching leather interior. Fitted overdrive, wires, limited-slip diff., etc., radio. An extremely fast example in superb condition. **£795**



ASTON MARTIN DB6 convertible, 1967. A one-owner car. Fitted 5-speed gearbox, Vantage engine, P.A.S., power hood, slot stereo, radio, chrome wires, electric aerial. Finished in oyster shell with blue hide trim and hood. **£2,995**

LOTUS Elan S2, Dec. 1965. Two owners from new. Full history. Spa white with black trim. Radio, head-rest, etc. **£775**

TRIUMPH Spitfire, 1969. Valencia blue with black trim, wire wheels. **£765**

TR4A, 1966. Finished in conifer green. Surrey top, wires, overdrive, radio. **£765**

JAGUAR XK150 3.8 S/E fixed-head coupé, 1960. A very original car with history available. Wire wheels, o/d, radio, etc. Mid blue contrasting trim. **£745**

TRIUMPH TR4A roadster, 1966. Red with black trim. Superb throughout, fitted w/w., o/d, drive, radio. **£745**

TRIUMPH Spitfire, 1968. B.R.G. with black trim, hard-top. **£695**

M.G.-B roadster, 1966. Mineral blue with black trim, extras include wire wheels, radio, t/cover, etc. **£695**

TRIUMPH Spitfire, 1968. Black. Fitted with matching Bermuda hard-top and overdrive. One owner. In nice condition throughout. **£675**

M.G.-B roadster, 1966. Black with red trim. Fitted radio, leather-rim wheel, wheel trims, etc. **£645**

ALFA ROMEO 1900 Super Sprint. Finished in duo-tone blue, chrome wheels, 5-speed box, radio. A host of spares, history, available. **£595**

AUSTIN Heavy Twelve saloon, 1929. A very fine car in near original condition. Dark blue body, black wings and interior. **£595**

ASTON MARTIN DB3, 1959. Burgundy with black trim. Good condition. **£595**

M.G.-B roadster, 1965. Red with black trim. Wire wheels, radio, special s/wheel, etc. **£595**

JAGUAR XK140 fixed-head coupé. Carmen red, matching leather trim, wire wheels, overdrive **£545**

JAGUAR XK150 f.h. coupé, 1958, 3.4. Sherwood green with matching trim. Three owners. Above average condition. **£495**

M.G. Midget, 1966 (Sept.). Tartan red with black trim. A one-owner car. In very nice condition. **£475**

AUSTIN Mini-Cooper, 1965. Yellow and black, special seats, flared wheel arches, etc. **£365**

AUSTIN Mini-Cooper, 1965, in tweed grey with white roof. **£365**

PEUGEOT 203 d.h. coupé, 1952. A very attractive L.H.D. 42/-seater. Black with beige trim and hood. **£295**

NEW LOTUS IMMEDIATE DELIVERY
LOTUS Elan S4 convertible. Special Equipment. Royal blue/black interior.
LOTUS Elan S4 convertible. Special Equipment. Lotus yellow/black interior.
LOTUS Elan +2S. Cirrus white, black trim. H.R.W., chrome wheels.
LOTUS Europa S2, in carnival red, black trim. Component form.
LOTUS SALES AND SERVICE



MAIN AGENTS

NEW RELIANT SCIMITAR GTE
ORDERS ARE NOW BEING TAKEN FOR THIS FABULOUS CAR. EARLY DELIVERY ON ALL MODELS. DEMONSTRATION GTE AVAILABLE BY APPOINTMENT.



MAIN AGENTS

NEW M.G.
EARLY DELIVERY OFFERED ON ALL M.G. MODELS INCLUDING THE BGT, M.G.-B ROADSTER AND M.G. MIDGET. PLEASE TELEPHONE FOR FULL DETAILS.



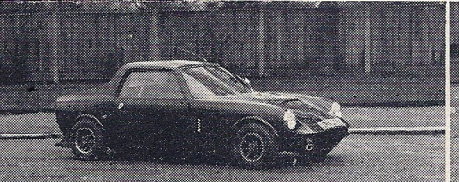
MAIN AGENTS

B-GT. Bronze yellow; h.r.w., etc.
Roadster. Bronze yellow; radials.
B-GT. Glacier white; overdrive.
Midget. Midnight blue; radials.

EXPORT—TAX FREE
GOING ABROAD OR VISITING THE U.K.
 Telephone us and find out how inexpensive it is to buy a new car to take with you. Excellent delivery on all models. We will take all the worry out of your hands, quick and efficient service.
SPECIALISTS IN PERSONAL EXPORT DELIVERIES



TORNADO Talisman, 1962. A full 4-seater GT car. Powered by a 1340 Cosworth Ford engine which has been completely rebuilt recently. Bills available. **£375**



COX GTM, 1969. 1293 Cooper S engine. Dark blue with black trim. Mag. wheels. A real Elan-eater. **£695**



AUSTIN HEALEY 3000, 1966. Midnight blue with black trim. Fitted wire wheels, radio, twin spots, 'new hood', etc. **£825**

Showrooms: Open daily 10a.m.-8p.m. Saturdays 10a.m.-7p.m. Sundays 10a.m.-5p.m. Works & Stores: Open daily 9a.m.-6p.m.