

# GOLD SEAL

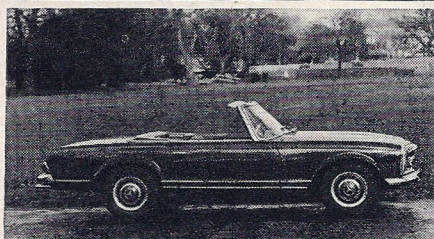
253-255, New Cross Road, London, SE 14 Telephone: 01-639 3204/5/6

## CAR COMPANY LIMITED

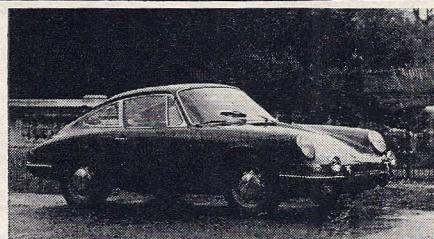
The sign of constant GT and sports car quality from England's leading sports car dealers



£1,695 LANCIA Flavia convertible. Mountain blue with red interior; one owner, 19,600 recorded miles; hard- and soft-tops, radio, etc. As illustrated.



£1,745 MERCEDES 230SL sports roadster, 1964, manual gearbox. Conifer green with tan interior, power steering, radio, etc. As illustrated.



£1,525 PORSCHE 912 sports coupé, 1966. Royal blue with blue trim, stereo tape player; superb condition throughout. Left-hand drive. As illustrated.

### NEW CARS

**LOTUS & GOLD SEAL.** Two names that are synonymous with quality high-performance motoring. Contact us now for all your Lotus requirements. Available shortly subject to being unsold: Europa S2, yellow; Plus Two 'S', red; Elan S4 d.h.c., S/E., red or white.

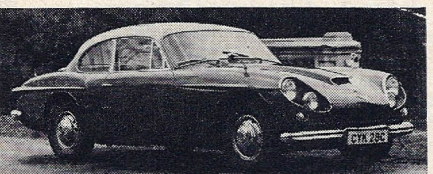
Elan S4, Europa S2 and Plus Two 'S' demonstration cars available at all times for your trial and inspection.

**DO NOT WORRY—EVEN IF YOU DID NOT BUY YOUR NEW OR USED LOTUS FROM US YOU CAN STILL ENJOY OUR EXCELLENT SERVICING FACILITIES.**

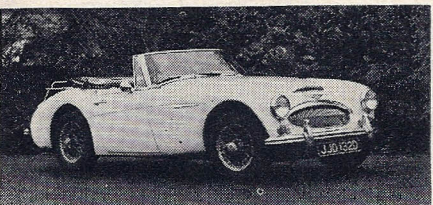
**M.G.-C GT.** Pale primrose with black trim, wire wheels, overdrive, radial tyres, h.r.w.  
**70 M.G. Midget.** Blue Royale, SP68s, Rostyle wheels.  
**70 M.G.-B sports.** Flame red, w/w., SPs.  
**70 M.G.-B sports.** Glacier white, w/w., o/d., SPs.  
**70 M.G.-B GT.** Pale primrose, w/w., o/d., h.r.s., SPs.  
**70 M.G.-B GT.** Pale primrose, w/w., o/d., h.r.s., SPs.  
**70 M.G.-B sports.** Blue Royale, w/w., o/d., SPs.  
**70 M.G.-B GT.** B.R.G., wire wheels, overdrive.  
**EXCELLENT SERVICING FACILITIES**

**MINI 850.** Glacier white with black trim.  
**MINI-COOPER.** Antelope with black trim, reclining seats.  
**MINI-COOPER** in flame red.  
**MINI-COOPER 1275 'S'.** Red and black with black trim.  
**EXCELLENT SERVICING FACILITIES**

**PERSONAL EXPORT ENQUIRIES ON ALL NEW CARS HANDLED QUICKLY AND EFFICIENTLY. WE SPECIALISE IN ALL ASPECTS OF PERSONAL EXPORT SALES. FROM INSURANCE, SHIPPING, AND INFORMATION ON EXPORT/IMPORT FORMALITIES.**



£1,245 JENSEN CV8 Mk. II, 1965. An excellent example in Sherwood green, silver roof and grey hide; automatic transmission, p.b. radio, etc. Fabulous performance. As illustrated.



£825 AUSTIN HEALEY 3000 convertible, 1966, in white; extras include overdrive, wire wheels, radio, luggage rack, etc. An extremely nice car. As illustrated.



£645 LOTUS VII, 1968, fitted 1,300-c.c. Ford engine. Bright yellow. Excellent order throughout.



£4,250 JENSEN Interceptor, 1969. Cirrus white with black trim, 11,500 miles; stereo tape, radio. Full history. Truly immaculate. As illustrated.

£4,150 BENTLEY Mulliner convertible, 1963, S.11 Steel grey over Tudor grey, power-assisted steering, power hood and electric windows; 46,000 recorded miles.

£2,995 ASTON MARTIN DB6, Manual. Silver grey, 5-speed gearbox, Webasto roof, radio, electric aerial, etc.

£1,895 PORSCHE 912. Black with special black interior, tinted glass all round, fitted p/b. radio, chrome wheels and 5-speed gearbox. A very impressive car.

£1,795 JAGUAR E-Type roadster, 1968. White with red trim, chrome wire wheels. Unmarked throughout.

£1,525 JAGUAR E-Type 2+2, Manual. Indigo blue with pale grey leather interior.

£1,465 LOTUS Europa S2, in Lotus yellow with black interior, power brakes, SP tyres; low mileage. Reg 1969. Excellent value.

£1,345 LOTUS Elan 2+2. Carnival red with black trim, radio. Supplied new by us.

£1,345 JAGUAR E-Type roadster, 1966. Indigo blue with red trim, chrome wire wheels, p/b. radio, etc.

£1,245 FIAT 2300S coupé, Ghia-bodied, 1966, in cobalt blue with black trim, two owners; electric windows, sun-roof. A very attractive 4-seater sports coupé.

£1,095 LOTUS Cortina, 1969. Lotus colours, under 2,000 miles; radio, special roof. As new.

£995 PORSCHE 356C f.h.c., Reg. Dec. 1963-64 model, in royal blue with black interior, must be the best available. Excellent condition throughout.

£945 M.G.-B GT, 1968, Mk. II. Tartan red with black trim, one owner from new; radio, spotlamps, etc.

£895 LOTUS Cortina, 1968. Blue mink with black trim, Rostyle wheels, radio, radial tyres, etc. Unmarked.

£865 M.G.-B roadster, 1967. Mineral blue with black trim; specification includes chrome wire wheels, overdrive, etc.

£845 PIPER GT, Reg. 1969. B.R.G. with black trim, fitted 1,000-c.c. B.M.C. 'A' series engine. A fabulous-looking car which is both economical and fast.

£825 ALFA ROMEO 2600 Spider, 1965. Chelsea grey with beige trim, 5-speed gearbox. A high-speed 4-seater sports convertible.

£765 TRIUMPH GT6, 1968. Left-hand drive. Midnight blue with light blue trim, overdrive, sun-roof radio, twin spots, etc. Faultless. Ideal Continental touring.

£765 SUNBEAM Alpine roadster, 1968. Leaf green with black trim, one owner; Avon tyres.

£695 FORD Cortina GT, 1968. White with black trim; 4-door example.

£685 M.G.-B, 1966. A fine example in Old English white with red interior, wire wheels, radio, folding hood, etc.

£665 TRIUMPH TR4A, 1965. Spa white with black trim, wire wheels, overdrive.

£645 MERCEDES 190SL roadster, 1960. Medium blue with blue trim, radio, new tyres; excellent throughout.

£645 LOTUS VII, 1968, fitted 1,300-c.c. Ford engine. Bright yellow. Excellent order throughout.

£635 JAGUAR 3.8 saloon, Reg. 1964/5 model. Black with red trim, chrome wire wheels, overdrive, radio. Really superb throughout.

£635 TRIUMPH Spitfire, 1968. Dark blue with black interior, tonneau, etc. Excellent condition throughout.

£625 AUSTIN HEALEY 3000 Mk. III, 1964. Red and black, overdrive, radio, twin spots, radial tyres, etc.

£595 LOTUS Super 7 1500, 1966, fitted Elan wheels, Avon tyres. Superb condition in yellow.

£585 M.G.-B roadster, 1965. Tartan red with black trim, wire wheels, twin spots, radio.

£575 TRIUMPH TR4 roadster, in B.R.G. with gold flash; wire wheels, overdrive.

£545 HONDA S800 f.h.c., 1967. Silver grey, sun-roof, radio; one owner, 19,000 miles recorded.

£515 SUNBEAM Alpine GT, 1965. White with red trim, overdrive, radio; excellent condition.

£495 TRIUMPH Vitesse convertible, 1966. White with black interior.

£495 TRIUMPH TR4 coupé, 1963. Signal red with black trim, overdrive, radio; excellent condition.

£475 AUSTIN 1800 saloon, 1965. Modified engine, stiffened suspension, spots, etc. Finished in grey.

£465 FORD Cortina GT, 1965. Red with black trim, Rostyle wheels, racing mirrors. Very attractive.

£445 FIAT cabriolet, 1961, OSCA engine, in Carlton grey with black trim; one owner; left-hand drive.

£375 TRIUMPH Spitfire, 1963. Green with black interior, Elan wheels, new G800 tyres, etc.

£295 AUSTIN HEALEY Sprite, fitted GT f.h. body. A very attractive and economical motor car.

£295 AUSTIN HEALEY Sprite, 1963, 1,098-c.c. engine, disc brakes.

£275 AUSTIN Mini-Cooper, 1963. Red and white; recent engine overhaul.

£195 FIAT 500 sun-roof saloon, 1965. White with red trim.

**THE FOLLOWING CARS ARE OFFERED AT TRADE VALUES — Some requiring attention :**

£395 ALVIS 3-litre saloon.

AUSTIN Mini-Cooper, 1964-65 Series. Matt black, servo, hydrostatic, p/b. radio, Stage One engine.

£165 SUNBEAM Alpine, 1961. Moonstone with black trim, overdrive.

£95 TRIUMPH TR2. White.

### AVAILABLE SHORTLY

£1,365 FIAT 124 coupé, 1969. Positano yellow 5-speed gearbox, radio. In first class order.

£995 LOTUS Elan f.h.c., 1967. White, radio, knock-on wheels, seat belts, SP tyres.

£945 ASTON MARTIN DB4 Superleggera, 1961. British Racing Green with grey interior, chrome wire wheels, radio.

£675 M.G.-B roadster, 1966. Black with black trim, wire wheels, overdrive. Full history. Serviced by us.

AUSTIN HEALEY 3000, 1963, convertible, overdrive.

ENGLAND'S LEADING SPORTS CAR DEALERS — CONSULT US FIRST, THE PEOPLE WHO REALLY KNOW SPORTS CARS, FOR THE BEST ADVICE, TOP SERVICE AND, OF COURSE A FIRST CLASS DEAL

Ass: New Cross Motor Co., Ltd.

OPEN DAILY 9.30 a.m.—8 p.m. SATS. 9.30 a.m.—7 p.m. SUNS. 10 a.m.—5 p.m.

