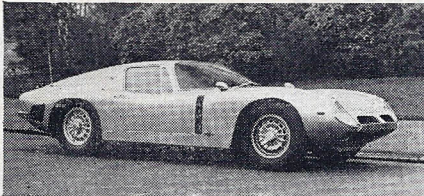
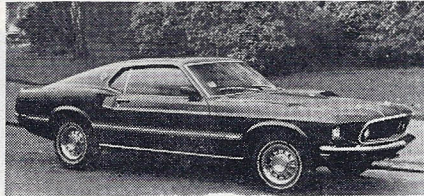


# GOLD SEAL SPORTS CARS

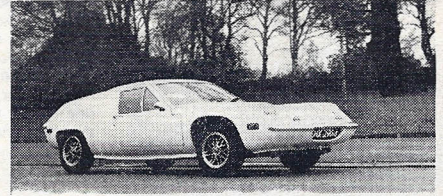
253-255, New Cross Road, London SE 14. Tel: 01-639 3204



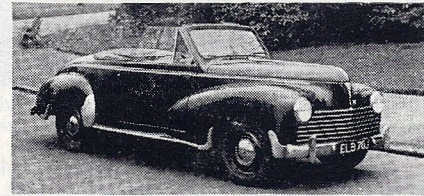
**ISO GRIFO, 1965.** Silver grey, 5.3-litre engine. Manual transmission, radio, tape recorder, etc. **£1,895**



**MUSTANG MACH I 1969.** Automatic with power steering. Finished in metallic mountain green with Mach I black flash finishers. Fitted 351 power unit, automatic gearbox. Power steering, radio, belts, etc. **£2,195**



**LOTUS Europa, Nov. 1970, J Reg.** Finished in Cirrus white with black interior. Fitted with 1,560-c.c. Hermes tuned engine, power brakes, mag/alloy wheels, air horns, steering lock, SP sports, front aerofoil. This superb example has only covered 1,500 miles. As new **£1,445**



**PEUGEOT 203 d/h coupe 1952.** A very attractive left-hand-drive 2/4-seater. Black with beige trim and hood. **£295**

## SELECTION FROM STOCK

**JAGUAR 4.2 'E'-Type Series II roadster 1969.** Finished in jet black with red leather interior, fitted radio etc. A really smooth looking car. **£1,945**

**ASTON MARTIN DB5, 1964.** B.R.G. with tan trim. Chrome wire wheels, 5-speed box, radio, etc. **£1,495**

**TRIUMPH TR6 roadster, 1969.** Cirrus white with black trim. Fitted wire wheels, radio. Excellent condition throughout. **£1,325**

**LOTUS Elan S4, f.h.c., 1969.** Special Equipment. Finished in Royal blue with black interior, Radio. Good condition throughout. **£1,195**

**LOTUS Elite, 1970.** Probably the finest example in existence. Built 1970 from mostly new parts and only done 1,600 miles since. ZF box, wide wire wheels. Primrose with black trim. **£1,095**

**M.G.-C GT automatic**—In Chelsea grey with black trim. Fitted wire wheels, radio. **£1,045**

**M.G.-B GT, 1968, 'G' Reg.,** in Old English white with black interior, fitted wire wheels, sunroof, radio and air horns all synchro gearbox. **£1,035**

**TRIUMPH TR5 roadster, 1968.** White with black trim. Extras include overdrive, push-button radio, G800 tyres, etc. **£995**

**TRIUMPH TR5 coupe, 1918,** in Jasmine yellow with tan trim. Supplied new by us to one lady owner, 21,000 recorded miles, radio, seat belts, etc. **£995**

**FORD Capri 1600 XLR, 1969.** 'H' Reg. Lime green with black trim. Push-button radio, low mileage. **£995**

**LOTUS Elan S3 convertible, 1967,** 'F' reg. Cirrus white with black trim. Fitted radio, new tyres. **£975**

**M.G.-B roadster, 1968, 'G' Reg.** White with black trim. Synchromesh gearbox, overdrive, radio, etc. **£965**

**M.G.-B roadster, 1968.** British Racing Green with black leather, overdrive, wire wheels, radio, folding hood, brake booster, air horns, Abarth exhaust etc. A Beauty. **£965**

**M.G.-B roadster, 1968.** Carmen red with black trim. Extras include overdrive, wire wheels, radio. **£925**

**LANCIA FULVIA coupe, 1967.** Maroon with black trim. A very fast and economical 2/4-seater. Recommended. **£895**

**M.G.-B GT.** British Racing Green with black trim. 1967. Fitted with overdrive and wire wheels. **£885**

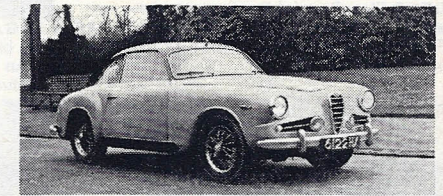
**M.G.-C roadster, 1968, 'G' Reg.** B.R.G. with black trim, wire wheels, overdrive, tonneau cover, etc. Full history from new supplied by us. **£885**

**RELIANT Scimitar, 1966.** Wire wheels, overdrive, finished in Nevada yellow. **£845**

**AUSTIN HEALEY 3000, 1966.** Midnight blue with black trim. Extras include wire wheels, radio, twin spots, etc. A new hood just fitted. **£825**

**M.G.-B roadster, 1967.** Old English white with black trim. Extras include wire wheels, overdrive. **£775**

**M.G.-B roadster, 1967.** Carmen red with black trim. Fitted radio. **£765**



**ALFA Romeo 1900 Super Sprint fixed-head coupe.** Finished in Florentine blue. Fitted chrome wire wheels, 5-speed gearbox. An excellent example of this rare model. An individual alternative to the older Astons or ACs, etc. **£465**

**TRIUMPH TR4A coupe, 1966 B.R.G.** with black trim. Overdrive, wire wheels, radio, etc. **£745**

**JAGUAR XK150 3.8 S/E fixed-head coupe, 1960.** A very original car with history available. Wire wheels, overdrive, radio, etc. Mid-blue with contrasting trim. **£745**

**TRIUMPH Spitfire, 1968.** B.R.G. with black trim. Hard-top. **£695**

**FIAT 1500 convertible, 1966.** Mid-blue with tan trim. 5-speed gearbox, power brakes. One titled owner for four years. A rare car in superb condition. **£685**

**TRIUMPH Spitfire, 1968.** Black, fitted with matching Bermuda hard-top and overdrive, one owner. In nice condition throughout. **£675**

**AUSTIN HEALEY Twelve Saloon, 1929.** A very fine car in near original condition. Dark blue body. Black wings and interior. **£595**

**M.G.-B roadster.** Carmen red with black interior. **£595**

**JAGUAR XK140 fixed-head coupe.** Carmen red with matching leather trim. Wire wheels, overdrive. Bills available. **£545**

**VOLKSWAGEN Beach Buggy, 'H' Reg.** 1,500-c.c. engine. Metallflake finish, Full weather equipment, radio. **£525**

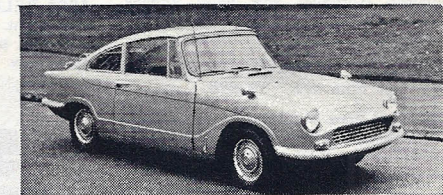
**AUSTIN HEALEY 3000, 1962.** Finished in Healey blue. Overdrive, wire wheels, good condition throughout. **£495**

**JAGUAR XK150 F/H coupe, 1958.** 3.4, Sherwood green with matching trim. Three owners. Above average condition. **£495**

**AUSTIN HEALEY Sprite Mk. I.** Fitted Coventry Climax engine, wire wheels. **£245**

**MORRIS Mini-Cooper S, 970 c.c., 1965.** **SIMCA 1000 GT, 1966,** in flame red, a very attractive and economical sports GT in very good condition. **M.G. Midget, 1968.** Dark blue with black trim. Extras include radio, wire wheels, tonneau cover, etc. **£245**

**SUNBEAM Tiger, 1966,** in Sebring white, fitted hard-and soft-tops Pirelli tyres, in above average condition throughout.



**BOND EQUIPE 1964.** An inexpensive 4-seater GT car finished in Malibu gold with black interior trim. **£265**

**EXPORT—TAX FREE**  
**GOING ABROAD OR VISITING THE U.K.**  
 Telephone us and find out how inexpensive it is to buy a new car to take with you. Excellent delivery on all models. We will take all the worry out of your hands, quick and efficient service.  
**SPECIALISTS IN PERSONAL EXPORT DELIVERIES**

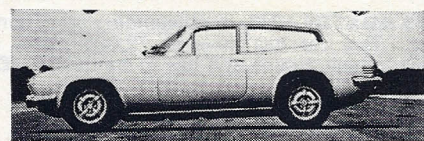
**NEW LOTUS IMMEDIATE DELIVERY**

- PLUS TWO 'S' 130. Cirrus white.
- ELAN Sprint f.h.c. Cirrus white
- ELAN Sprint d.h.c. Royal blue.
- ELAN S4 S/E d.h.c. Lotus yellow
- EUROPA S7. Cirrus white component
- S4 Series LOTUS Seven S/E. MAIN AGENTS
- Bright yellow **£995**

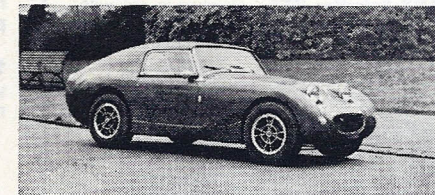


**NEW RELIANT SCIMITAR GTE**  
 ORDERS ARE NOW BEING TAKEN FOR THIS FABULOUS CAR. EARLY DELIVERY ON ALL MODELS. DEMONSTRATION GTE AVAILABLE BY APPOINTMENT LONDON AND HOME COUNTIES.

**GTE.** Everest white, automatic, radio, Hrs.  
**GTE.** Acacia green, tan interior, o/d, Hrs.  
**GTE.** Nevada yellow, tan interior, o/d radio, Hrs.  
**GTE.** Nevada yellow, black trim, automatic, Hrs.



**SCIMITAR GTE**



**AUSTIN HEALEY Sprite Mk. I.** Lenham fixed-head bodywork, supercharged, 1,275-c.c. BMC engine. Cosmic mag. alloy wheels, air horns, etc. **£325**

Showrooms: Open daily 10a.m.-8p.m. Saturdays 10a.m.-7p.m. Sundays 10a.m.-5p.m. Works & Stores: Open daily 9a.m.-6p.m.