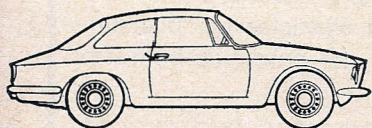


HEXAGON

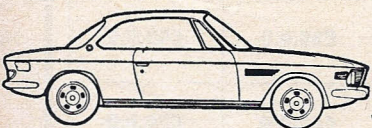
New Cars



MAIN AGENTS

**ALFA
ROMEO**

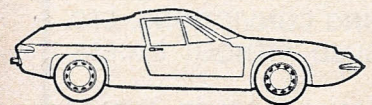
ALFA ROMEO 1750 GTV, OCHRE
ALFA ROMEO 1750 GTV, METALLIC BLUE
ALFA ROMEO 1750 BERLINA, WHITE
ALFA ROMEO 1750 BERLINA, BEIGE
ALFA ROMEO GIULIA SUPER, RED



MAIN AGENTS

BMW

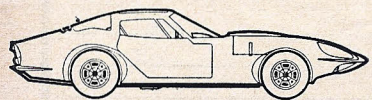
BMW 2800 C.S. COUPE, SILVER
BMW 2800, AUTO. & P.A.S., WHITE
BMW 2002, MANUAL, COLORADO YELLOW
BMW 2002, AUTOMATIC, WHITE



MAIN AGENTS

LOTUS

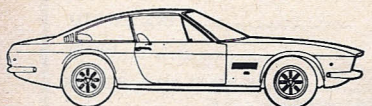
EARLIEST POSSIBLE DELIVERY OF ALL LOTUS MODELS



DISTRIBUTORS

MARCOS

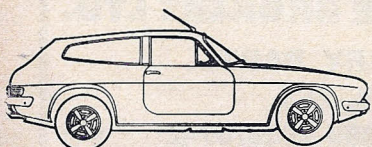
MARCOS MANTIS, SILVER
MARCOS VOLVO 3-LITRE, YELLOW
MARCOS VOLVO 3-LITRE, BAHAMA YELLOW
MARCOS 3-LITRE, YELLOW
MARCOS 3-LITRE, WHITE
MARCOS 2-LITRE, YELLOW



SOLE UK DISTRIBUTORS

MONTEVERDI

375L. PRUSSIAN BLUE



DISTRIBUTORS

RELIANT

EARLIEST POSSIBLE DELIVERY OF SCIMITARS

Low Mileage

1969 ALFA ROMEO 1750 Berlina saloon. Finished in white with black trim. Fitted with push-button Motorola. This one-owner car has covered 15,000 miles and is in finest condition. **£1,495.**

1968 ALFA ROMEO 1750 GTV. Ochre with black trim. Fitted radio and stereo tape player. 19,000 miles. **£1,595.**

1968 ALFA ROMEO 1750 saloon, finished in dark brown, 21,000 miles, superb order. **£1,445.**

1970 ALFA ROMEO Super. Finished in quarry beige with tan interior. Maintained by us from new it has covered only 8,000 miles and is in its totally unmarked and original condition. **£1,445.**

1969 ALFA ROMEO 1750 GTV. Finished in red with black trim. Fitted with sun-roof, Radiomobile and Pirelli tyres. Only 14,000 miles from new. **£1,745.**

1969 BMW 2002 coupe. Finished in white with blue trim. Fitted radio. 20,000 miles, outstanding condition throughout. **£1,445.**

1969 UREN Savage 'E'. Finished in beige with black trim. Fitted with a sun-roof. this is an exceedingly potent motor car having covered only 21,000 miles from new. **£1,345.**

1968 GILBERN Genie 3-litre V6. Fitted with overdrive, black-centred Minilite magnesium wheels and radio. This car has covered 26,000 miles. **£1,095.**

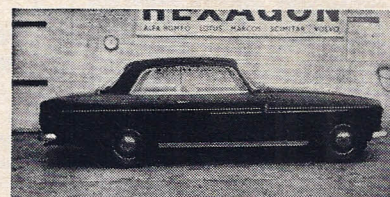
1969 'H' Reg. JAGUAR 'E'-Type roadster. Finished in red with black trim. Fitted with chrome disc wheels and radio. This one-owner motor car has covered only 7,000 miles and is literally indistinguishable from new. **£2,045.**

1970 'J' Reg. 'E'-TYPE roadster. Finished in primrose with black trim. Fitted chrome wire wheels, whitewalled Aquajet tyres. Twin spotlights; 5,000 miles only. As new throughout. **£2,245.**

1968 Dec. JAGUAR 'E'-Type 2+2 Automatic. Finished in white with dark blue trim. Fitted Sundym windows, wire wheels, sun-roof, radio and stereo unit. 21,000 miles only and in outstanding condition. **£2,145.**

1970 JAGUAR 'E'-Type 2+2 Automatic. Finished in sable. Fitted c.w.w., h.r.w. 13,000 miles. Unblemished throughout. **£2,495.**

1969 JAGUAR 'E'-Type 2+2 Automatic. Finished in dark green with contrasting green trim. Fitted wire wheels, heated rear window and radio. One owner, 19,000 miles only and in exceptional condition. **£2,145.**

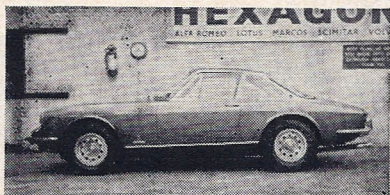


1967 BRISTOL 409. Finished in Rolls-Royce regal red with leatherette top and grey trim. This most impressive car is fitted with automatic transmission and heated rear window. One owner and 38,000 miles from new. **£2,745**

1969 Model, Reg. '68 Dec., JAGUAR 'E'-Type 2+2. Specially finished in marigold with black interior trim. Manual transmission, chrome wire wheels, Motorola radio, heated rear window. 25,000 miles from new. **£1,945.**

1968 JENSEN Interceptor. Finished in silver with blue trim. Fitted with a radio. 25,000 miles. Unblemished. **£3,595.**

1970 LOTUS Elan +2S. Finished in white. Sun-roof, radio, h.r.w., chrome wheels. Arriving shortly. **£2,095.**



1969 FERRARI 365 GTC. Finished in metallic grey with dark blue trim. Fitted radio and stereo. 17,000 miles only and a most impressive motor car. **£5,695.**

1970 LOTUS Elan S4, S/E, d.h.c. Finished in Bahama yellow with black trim. 5,000 miles only. **£1,495.**

1970 (June) Reg. LOTUS Elan +2S. Finished in metallic light green with black trim. Fitted radio, heated rear window and chrome wheels. 6,000 miles. Unmarked throughout. **£2,095.**

1970 LOTUS Elan Special Equipment fixed-head coupe. Finished in white. Fitted with a heated rear window. This car was supplied by us and has covered only 800 miles. There is a genuine reason for the sale. **£1,495.**



1969 LOTUS Elan +2S. Finished in sable with black trim. Fitted radio and chrome wheels. 22,000 miles. **£1,795.**

Any car, any vintage taken in part exchange.

26 North Hill, Highgate, London N6.

01.348 5151 (6 lines)

01.340 3431 (4 lines)

Low Mileage



1969 MASERATI Ghibli. Finished in yellow with tan trim. This magnificent car is fitted with automatic transmission. Power-assisted steering, air-conditioning, radio and stereo unit, and heated rear window. It has covered 11,000 miles only from new. **£6,995.**

1969 LOTUS Elan Special Equipment convertible. Finished in Carnival red with black trim. Chrome wheels. 12,000 miles only from new. **£1,345.**

1970 MARCOS Volvo 3-litre. Finished in chrome yellow. Nominal mileage. Alloy wheels. **£1,795.**

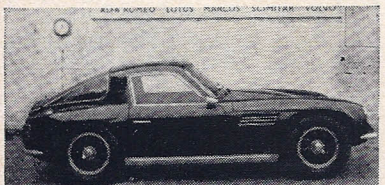
1970 MARCOS Ford 3-litre V6. Tangerine, black trim. Nominal mileage. Alloy wheels. **£1,745.**



1969 PORSCHE 911S. Finished in black with matching trim. Fitted electric steel sliding sun-roof, Sundym glass, rear wiper, slot stereo and Radiomobile. One titled owner full service history available. A superb example. **£3,695.**

1969 (Dec.) steel chassis MARCOS 3-litre. Finished in French blue with black trim. Stereo, sun-roof, alloy wheels. **£1,645.**

1969 3-litre MARCOS. Finished in chrome yellow, black trim. 11,000 miles. Alloy wheels. **£1,595.**



1968 T.V.R. Tuscan 4.7 V8, S/E. Finished in Roman purple with black trim. Fitted with black centred polished Minilite magnesium wheels. Offers perhaps the most shattering performance of any road car. **£1,495.**

1968 MARCOS 1600 GT. Finished in white with black trim. Fitted with Minilite magnesium wheels, sun-roof Motorola radio. This car has covered only 15,000 miles. **£1,245.**

1970 M.G.-B GT. Finished in primrose with black trim. Fitted with overdrive, wire wheels, head-rests, leather-rim wheel and rear seat. This car has covered only 8,000 miles and is as new throughout. **£1,345.**

1969 M.G.-C GT. Finished in mineral blue with black trim. Fitted with overdrive, wire wheels, quartz-iodine spot lamps. This car has covered only 12,000 miles from new and is in an unmarked condition throughout. **£1,345.**

1969 M.G.-C GT. Finished in snowberry white with black trim. Fitted wire wheels, overdrive and Radiomobile. 17,000 miles only. **£1,195.**

1969 M.G.-B roadster. Finished in white with black trim. Fitted with overdrive, wire wheels and radio. It has covered just 10,000 miles and is literally indistinguishable from new. **£1,095.**

1969 M.G.-C GT. Finished in British Racing Green with black trim. Fitted with wire wheels, overdrive and radio, this car is in outstanding condition. **£1,195.**

1959 M.G.-A 1600 Twin Cam drophead coupe. Finished in blue with black trim, this car has had £400 spent on it in our workshops. Extras include 5½J nickel-plated knock-off wheels. Has to be seen. **£695.**

1969 model (Reg. Dec. 1968) PORSCHE 912, in white with red interior trim. Fitted 5-speed gearbox, heated rear window, Radiomobile, cassette player. Offered at **£2,245.**

1968 PORSCHE 911S. Finished in maroon with tan trim. Fitted Recardo seats, electric steel sliding sun-roof, radio and stereo. 29,000 miles. **£2,995.**

1970 RELIANT Scimitar GTE. Finished in red with black trim. Radio. Low-mileage example. **£2,095.**

1969 RELIANT Scimitar GTE. Finished in dark blue with black trim. Fitted radio, rear wiper. This car has covered only 7,000 miles. **£1,795.**

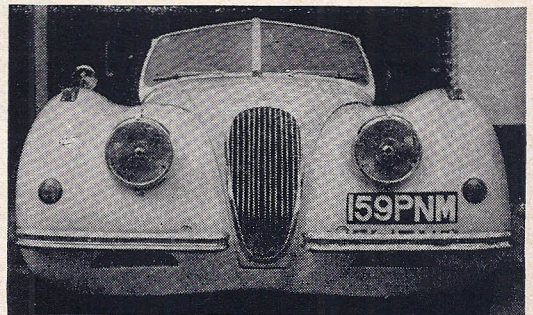
1969 RELIANT Scimitar 3-litre GT saloon. Finished in midnight blue with black trim. Fitted with a Radiomobile and Pirelli tyres. This car has covered 11,000 miles only and is a superb example. **£1,445.**

New but registered TRIUMPH Stag hard-top coupe. Finished in conifer green with red trim. Fitted automatic transmission, power-assisted steering and heated rear window. **£2,495.**

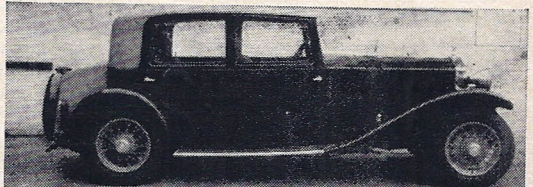
1970 TRIUMPH TR6. Finished in signal red with black trim. Fitted overdrive, wire wheels and SP tyres, **£1,495.** Similar car in white also available. **£1,495.**

1969 TRIUMPH TR6, in conifer green with black trim, overdrive and Motorola **£1,345.** Also available is a late model hard-top coupe finished in white.

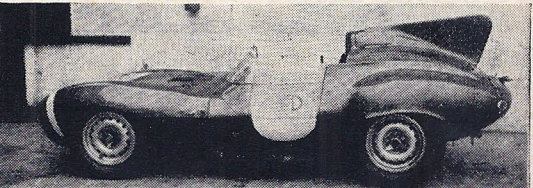
Classic



1950 JAGUAR XK120 roadster, rebuilt with the following specification. 3.4 litre engine, with the 4.2 litre gearbox and constant mesh starter. White coachwork, rechromed throughout and fully re-trimmed in red Connolly hide with red carpets. Koni shock absorbers, 15in. 'E' type chrome wire wheels and whitewalled radial tyres.



ROLLS-ROYCE 20/25 Red Label sports saloon. This owner-driver car, with strikingly elegant bodywork by H. J. Mulliner, is finished in dark green and matching trim, with beige leatherette top and matching large boot box. This car's 140,000-mile history is traceable, and the engine is virtually inaudible when idling. One of the most impressive 20/25s available.



D-Type JAGUAR, ex-Ecurie Ecosse. **£1,000** worth of spares. Sensible offers considered.

ROLLS-ROYCE Phantom II tourer, boat-tailed replica in maroon, with polished aluminium bonnet and solid oak running-boards. Completely retrimmed in Connolly hide. A truly majestic touring carriage.

SS100 3½-litre. This magnificent example, finished in white with red leather trim, is in *concoirs* condition, having covered only 300 miles since being completely rebuilt.

1933 AUSTIN 12/6, in outstanding condition for its year. This car has covered 72,000 miles, but its newly rebuilt engine still has to be run-in.

**AVAILABLE
SHORTLY**

1933 ROLLS-ROYCE Phantom II coupe.
1938 SS 3½-litre drophead coupe.
1933 ROLLS-ROYCE Phantom II.

Insurance and hire purchase facilities.