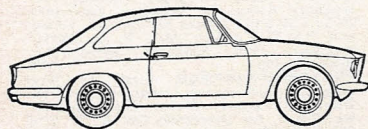


# HEXAGON

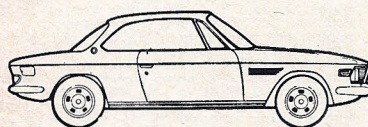
26 NORTH HILL,  
HIGHGATE, LONDON N.6  
01 348 5151  
01 340 3431

## New cars

PERSONAL EXPORT SERVICE  
AVAILABLE

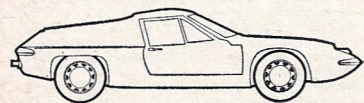


MAIN AGENTS  
**ALFA ROMEO**  
1750 GTV. RED  
1750 GTV. METALLIC BLUE



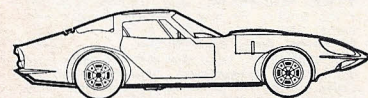
MAIN AGENTS  
**BMW**

2800. MANUAL/POWER.  
ATLANTIC BLUE  
2800 CS. MANUAL/POWER.  
MAROON

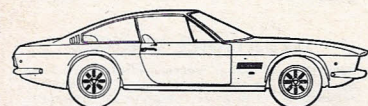


MAIN AGENTS  
**LOTUS**  
EARLIEST DELIVERY OF KIT  
EUROPA

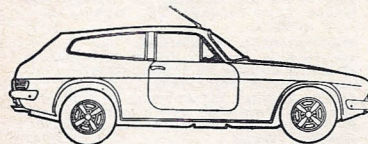
ELAN SPRINT, +2S 130,  
CONDA GREEN



DISTRIBUTORS  
**MARCOS**  
3-LITRE — COLOUR CHOICE

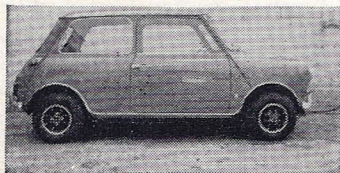


UK DISTRIBUTORS  
**MONTEVERDI**



DISTRIBUTORS  
**RELIANT**  
SCIMITAR GTE. RED

## Used Cars



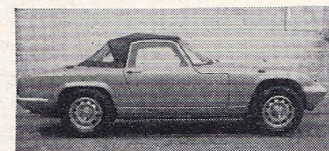
**1970 ALFA ROMEO 1750 saloon.** Metallic olive green, pigskin trim. Fitted radio. One owner and 13,000 miles from new. **£1,695.**

**1969 ALFA ROMEO 1750 GTV.** Red, black trim. Fitted push-button radio. One owner; supplied and serviced by ourselves. **£1,795.** Similar car available in French blue.

**1969 ALFA ROMEO GIULIA SUPER.** Beige with pigskin trim. Fitted push-button radio. An outstanding, one owner car. 26,000 miles. **£1,195.**

**1970 AUSTIN Mini-Cooper 'S', Mk. III.** Bronze yellow with black trim. Fitted alloy wheels. A one-owner car and just 5,000 miles from new. **£995.**

Arriving shortly, **1970 Mini-Cooper 'S', Mk. II.** Finished in white. One owner. 15,000 miles.



**1969 'H'-registered Crayford CORTINA 3-litre.** Aubergine with black trim. Alloy wheels. One owner and 24,000 miles from new. **£1,295.**

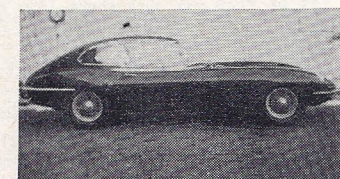
**FERRARI 365 GT 2+2.** First registered March '69. Finished in red with natural hide trim. Self-levelling suspension. Power steering, magnesium wheels, electric windows, radio, heated rear window. 19,000 miles and outstanding throughout. **£5,995.**

**1968 GILBERN Genie 3-litre V6.** Finished in satin silver with black trim. Fitted overdrive, alloy wheels, electric windows and quartz-halogen spot-lights. 26,000 miles from new. **£1,145.**

**1970 JAGUAR 'E'-Type 2+2, 'J' registered.** Carmen red, black trim. Fitted automatic transmission, power steering, chrome wire wheels, and spot-lights. 5,000 miles only and in outstanding condition. **£2,995.**

**1970 JAGUAR 'E'-Type 2+2.** Finished in Carmen red, black trim, chrome wire wheels, sun-roof, radio, heated rear window. Superb throughout. **£2,495.**

**1969 JAGUAR 'E'-Type 2+2.** British Racing Green. Fitted chrome disc wheels, radio, heated rear window. One owner, 12,000 miles only. **£2,195.**



**1971 JAGUAR 'E'-Type f.h.c.** Finished in Regency red with black hide trim. Fitted chrome wire wheels, Sundym glass throughout and heated rear window. 200 miles only. **List price.**

**1968 JAGUAR 'E'-Type fixed-head coupe.** British Racing Green contrasting green trim. Fitted chrome wire wheels. 16,000 miles only and an exceptional example. **£1,795.**

**1970 JAGUAR 'E'-Type fixed-head coupe.** Finished in white with black trim. Fitted chrome wire wheels, heated rear window. 8,000 miles only, as new throughout. **£2,395.**

**1968 JAGUAR 'E'-Type 2+2, Series 2.** Primrose, black trim. Fitted alloy wheels, heated rear window, radio and wing mirrors. 25,000 miles. **£1,995.**

**1970 LOTUS Cortina Twin-Cam.** White, black trim. 6,000 miles only and indistinguishable from new. **£1,195.**

**1970 LOTUS Elan d.h.c., SE, S4.** Yellow with black trim. This one-owner car has covered just 11,000 miles from new. **£1,445.**

**1970 LOTUS +2S.** Royal blue, black trim. Push-button radio, Sundym screen; 5,000 miles only, as new throughout. **£2,095.**



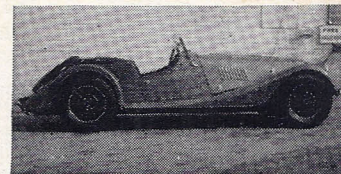
**1970 LOTUS +2S, 'J' -registered.** White with black trim. Push-button radio and heated rear window. One owner. 8,000 miles. **£2,195.**

**1969 'H'-regd. M.G.-B roadster.** Finished in snowberry white with black trim. Fitted with overdrive, wire wheels, tonneau cover, quartz spotlights, leather wheel. Available with Bermuda hard-top. One owner from new. **£1,095.**

**1969 M.G.-C GT.** Finished in mineral blue with black leather trim. Fitted overdrive, wire wheels, reclining seats, heated rear window, quartz-iodine spotlamps. 12,000 miles only and as new throughout. **£1,245.** Similar car available with 'H' registration.

**1969 PORSCHE 911E.** Finished in Ossi blue with white interior trim. Fitted Sundym glass, electric steel sliding sun-roof, heated rear window. 19,000 miles and a superb motor car. **£3,395.**

**1970 PORSCHE 911S 2.2-litre.** Signal orange, black trim. Fitted electric steel sliding roof, electric windows, Sundym glass. Blue Spot radio. 10,000 miles and as new throughout. **£4,445.**



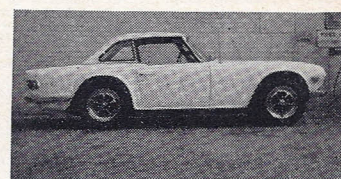
**1970 MORGAN +8, 3.5-litre.** Moss green, black trim. Fitted alloy wheels, radio. 3,000 miles only. **£1,695.**

**1970 'J'-registered M.G.-B GT.** Bronze yellow. Fitted overdrive and Poststyle wheels. A one-owner car and just 5,000 miles from new. **£1,395.**

**1970 'J'-regd. RELIANT Scimitar GTE, Automatic.** Finished in Mexican red with black trim. Fitted radio, heated rear window and rear wiper. One owner, 9,000 miles only. **£2,095.** Also a selection of exceptional 1969 GTEs.

**1968 TRIUMPH TR5 roadster.** Finished in white with black trim. Fitted hard- and soft-top, wire wheels, overdrive and radio. 17,000 miles only. **£1,095.**

**1970 TRIUMPH TR6 coupe roadster.** Finished in white with black trim. Fitted overdrive and radio. Indistinguishable from new. **£1,395.**



## STOP PRESS

At the time of going to press we have the following cars arriving:

**1970 Jaguar 'E'-Type d.h.c.,** chrome wire wheels, 14,000 miles.

**1970 Jaguar 'E'-Type f.h.c.**

**1970 'J' Regd. Scimitar GTE, Automatic.**

**1969 M.G.-C GT, Automatic.**

## CLASSIC CARS



**1934 ROLLS-ROYCE Phantom II boat-tailed tourer.** Aluminium replica coachwork. Finished to the highest standard in maroon, with polished bonnet. Retrimmed throughout in Connolly hide. Rewired as necessary. Crack-tested head. (Illustrated) **£2,995.**

**1938 JAGUAR SS 3½-litre 4-seat drophead coupe.** Just restored to near concours condition.

Any car taken in part exchange  
Insurance and hire purchase available

Personal export arranged  
Late low mileage sports cars bought for cash