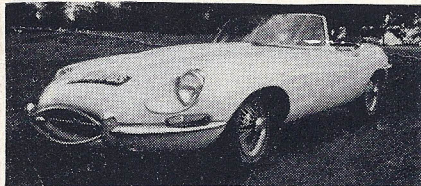


Open
9.30-6.30

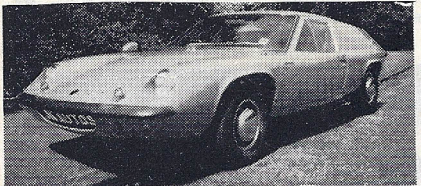
JK SPORTSCARS

Telephone
01-340 7487

1967 M.G.-B, in mineral blue with black trim, one owner from new; fitted wires and overdrive £799
1968 'E'-Type drophead (illustrated), in white with black upholstery. This one-owner car is fitted with chrome wire wheels, p.b. radio and steering lock. At 21,000 miles only it must represent terrific value at £1,675



1968 TRIUMPH TR5, in jasmine with black trim, fitted with overdrive and Rostyle wheels. A beautiful car £1,029
1966 SUNBEAM Tiger, in red with black upholstery; fitted with a p.b. radio. Must be one of the nicest available £775
1964 M.G.-B, in B.R.G., fitted wire wheels and overdrive, above average condition £525
1970 AUSTIN HEALEY Sprite, in primrose; one owner, 6,000 miles only; fitted with wire wheels £799
1968 LOTUS Super Seven (illustrated), in orange, fitted Cosmic mag. alloy wheels, full weather equipment and a heater £675

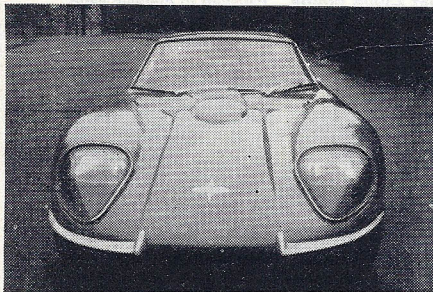


1967 JAGUAR 'E'-Type Plus 2. White with black upholstery; virtually a one-owner car, low mileage; fitted chrome wires and p.b. radio £1,450



SPORTSCARS WANTED

1970 'H' Reg. JAGO Model 'T' Special Drag (illustrated), fitted 3.4 Jaguar engine and gearbox, with disc brakes all round. Extremely wide wheels and full weather equipment. Terrific fun-car, eats Beach Buggies!! £595



1970 LOTUS Europa (illustrated), in tangerine; one owner from new, 10,000 miles; exceptional condition £1,395

1968 PIPER GT (illustrated), red with black trim. 1,340-c.c. Cosworth engine; fitted wide mag. alloy wheels £895

1966 BOND Equipe, in red with black trim. This very low-mileage example looks like a two-year-old and represents economical four-seater sports-car motoring £499

1964 M.G.-B, in red with black trim, fitted wires £499

1966 'E'-Type drophead, in primrose with black trim, fitted chrome wire wheels, p.b. radio and Sundym glass £1,195

1968 LOTUS Elan S.3 S.E. drophead, in red with black trim, k.o. wheels, radio, etc. £975

1964 AUSTIN HEALEY 3000 Mk. III, in white/black duo-tone with black trim, fitted wire wheels and overdrive and a radio. A very fine example £649

1969 MARCOS 3-litre (illustrated), in electric blue with black trim, fitted mag. wheels, sun-roof, radio, etc. Superb example £1,495

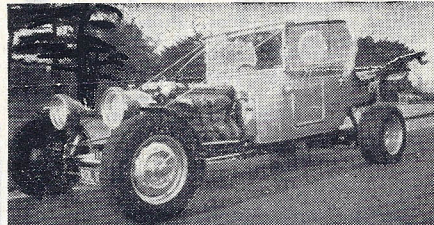
1969 Reg. '70 model M.G. Midget, in blue royale, very low mileage; fitted wire wheels £759

1969 M.G.-C, in mineral blue with black trim, fitted wire wheels and overdrive; exceptional example £995

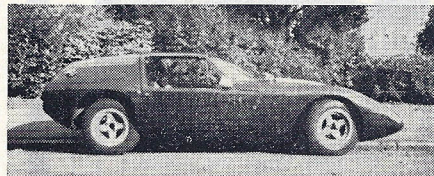
1967 Mk. 2 4.7 SUNBEAM Tiger (illustrated), in midnight blue with black upholstery. This rare flying machine is a one-owner from new with a very low mileage. One of the very few genuine 4.7s in existence; an investment at £1,050

1968 MARCOS 1,600 c.c., in Lamborghini lime with black upholstery. This exceptionally fast car is fitted with fuel injection, Minilite mag. alloy wheels, sun-roof and radio £1,245

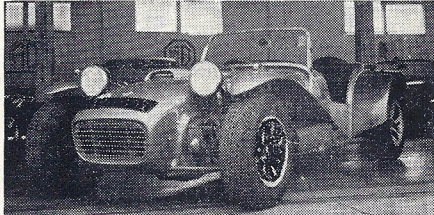
1969 LOTUS Elan S.4, Special Equipment, d.h.c., in metallic silver £1,260
1967 M.G.-B, in black, fitted wire wheels £729
1965 HEALEY Sprite, in white, with hard- and soft-top; above average example £399



1969 TRIUMPH TR5, in white with black trim, fitted overdrive and Rostyle wheels £1,095
1965 SUNBEAM Tiger, in Arctic white with black trim; recently fitted new hood completes this superb example £625



1968 MARCOS 1600 GT, in chrome yellow with black trim; one owner from new, 21,000 miles only; fitted wire wheels, sun-roof and a radio... .. £1,225
1967 SPITFIRE Mk. 3, in red with black trim, fitted wires £539



1966 SUNBEAM Alpine GT, in dark blue, fitted overdrive and radio £549
1967 TRIUMPH TR4A, in red with black trim, fitted wire wheels and overdrive, radio and recoil seat belts £799
1965 M.G.-B, in B.R.G. with black trim, fitted wires and overdrive. A fine example £625

DUE TO THE FACT THAT WE PURCHASE CARS DAILY IT IS IMPOSSIBLE TO LIST OUR CURRENT STOCK. IF THE CAR OF YOUR CHOICE IS NOT ADVERTISED, PLEASE DO NOT HESITATE TO TELEPHONE OUR SALES OFFICE, OR, BETTER STILL, COME AND BROWSE AROUND OUR SHOWROOM!

FOR YOUR CONVENIENCE : 24-HOUR ROBOPHONE SERVICE.

405 GREEN LANES - HARRINGAY - LONDON N4

(Nearest station : Manor House Tube, Piccadilly Line)

(Location : A to Z, Page 32, Section A4)

OUR STOCK CHANGES DAILY

For cars not advertised, please phone. All cars in our showroom can easily be seen whilst we are closed.

INFORMATION

All cars three months guaranteed. All cars checked over in our workshops. Any car, motorcycle, etc., taken in part exchange.