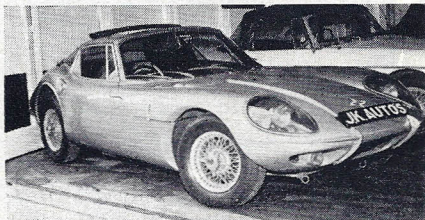


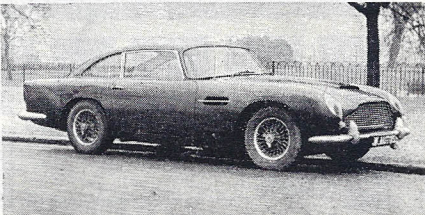
Open  
9.30-6.30

# JK SPORTSCARS

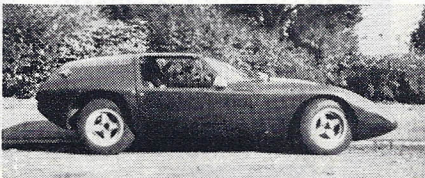
Telephone  
01-340 7487



**1968 MARCOS 1600 GT**, in chrome yellow, sun-roof, radio, wire wheels. Choice of two from ... **£1,095**  
**1966 SUNBEAM Tiger**, in red with black trim, fitted radio, hard-top. Choice of two, from ... **£749**  
**1964 M.G.-B.**, in red with black trim. Fitted wire wheels, radio and tonneau ... **£525**  
**1969 TRIUMPH TR6**, in white with black trim (*similar to illustration*). This well cared for car is in beautiful condition and must be value at ... **£1,275**



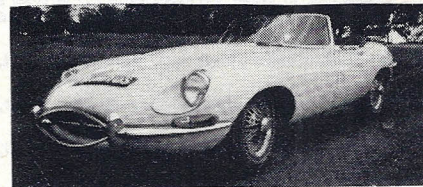
**1967 M.G.-B.**, in mineral blue with black trim, fitted wire wheels and overdrive ... **£799**  
**1967 Mk.III SPITFIRE**, in white with black trim. This exceptional car has covered only 25,000 miles **£559**  
**1965 'E'-Type JAGUAR drophead**, in metallic silver blue. Fitted p.b. radio. A fine example ... **£1,075**  
**1969 M.G. Midget**, in dark blue with black trim. Fitted wire wheels and matching hard-top ... **£759**  
**1968 LOTUS Super Seven**, in orange, with twin-choke Weber. Fitted Cosmic mag. wheels, heater and full weather equipment ... **£675**



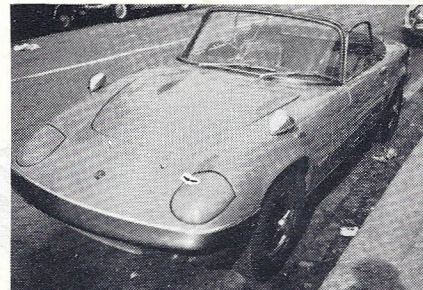
## SPORTSCARS WANTED

## CASH OR PART EXCHANGE

**1968 TRIUMPH TR5 P.I.**, in royal blue. This pristine example is fitted with overdrive and tonneau ... **£1,045**  
**1969 LOTUS Elan S4 S.E. drophead** (*illustrated*), in silver with black trim. Fitted p.b. radio; low mileage ... **£1,245**  
**MARCOS 1600 GT Crossflow** (*illustrated*), in Rolls regal red. This one-owner car is fitted with sun-roof, chrome wire wheels, p.b. radio and slot stereo, etc. Actual Motor Show car ... **£1,095**  
**1967 M.G.-B.**, in black with matching trim. Fitted wire wheels **£749**  
**1968 PIPER GT** (*illustrated*), in red with black trim. Fitted wide mag. wheels. Outstanding appearance ... **£895**  
**1967 M.G.-B GT**, in B.R.G. with black trim. Fitted chrome wire wheels, overdrive, new Cints. ... **£875**  
**1966 ASTON MARTIN DB5** (*illustrated*), in Fiesta red with tan hide upholstery. Chrome wire wheels, Sundym glass, Selectaride suspension, electric windows, 5-speed gearbox; 38,300 recorded miles.  
**1969 MARCOS 3-litre**, in opalescent midnight blue with black trim. Fitted sun-roof, mag. wheels, p.b. radio, electric windows. A real stunner ... **£1,395**  
**1968 JAGUAR 'E'-Type** (*illustrated*). Why do we still have this one-owner, well looked after, 21,000-mile unmarked very original car. There can't be too many 1968 'E's like this on the market at ... **£1,695**  
**1965 LOTUS Seven**. 1,485-c.c. Ford engine. With wide wheels, full weather equipment ... **£529**  
**1968 LOTUS Elan, Special Equipment**, in red with black trim. Fitted p.b. radio ... **£1,065**  
**1967 TRIUMPH TR4A**, in red with black trim. Fitted wire wheels and overdrive. Very clean example ... **£845**  
**1965 SUNBEAM Tiger V8**, in white with black trim. Fitted p.b. radio. Very quick car ... **£629**  
**1967 +2 'E'-Type JAGUAR**, in white with black trim. Fitted chrome wire wheels, p.b. radio; low mileage ... **£1,475**  
**1969 LOTUS Europa** in Bahama yellow. One owner from new, fitted Cosmic mag. wheels, p.b. radio ... **£1,245**



**1968 MARCOS GT 1600**, in Lamborghini lime with black trim. Fitted fuel injection, Minilite mag. wheels, sun-roof, push-button radio ... **£1,195**  
**1968 M.G.-B GT Mk. II**, white with black trim. Full synchromesh gearbox ... **£949**  
**1965 M.G.-B.**, in red. Fitted wire wheels, overdrive ... **£599**



**1966 TR4A**, in white. Fitted wire wheels and overdrive ... **£725**  
**1966 M.G.-B.**, in red. Fitted wire wheels ... **£649**  
**1968 LOTUS +2 Elan**, in red; low mileage **£1,295**  
**1967 M.G. Midget Mk. III, 1,275 c.c.**, in B.R.G. Fitted wires ... **£559**  
**1964 JAGUAR 'E'-Type fixed-head**, in blue ... **£795**



**DUE TO THE FACT THAT WE PURCHASE CARS DAILY IT IS IMPOSSIBLE TO LIST OUR CURRENT STOCK. IF THE CAR OF YOUR CHOICE IS NOT ADVERTISED, PLEASE DO NOT HESITATE TO TELEPHONE OUR SALES OFFICE OR, BETTER STILL, COME AND BROWSE AROUND OUR SHOWROOM!**

FOR YOUR CONVENIENCE : 24-HOUR ROBOPHONE SERVICE.

**405 GREEN LANES - HARRINGAY - LONDON N4**

(Nearest station : Manor House Tube, Piccadilly Line)

(Location: A to Z, Page 32, Section A4)

### OUR STOCK CHANGES DAILY

For cars not advertised, please phone. All cars in our showroom can easily be seen whilst we are closed.

### INFORMATION

All cars three months guaranteed. All cars checked over in our workshops. Any car, motorcycle, etc., taken in part exchange.