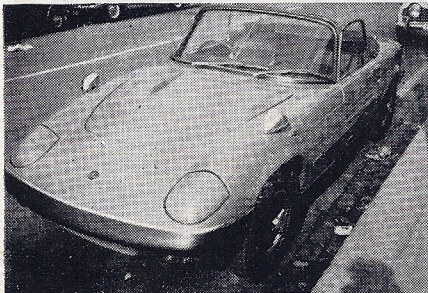


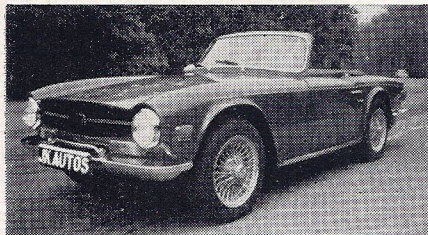
Open
9.30-6.30

JK SPORTSCARS

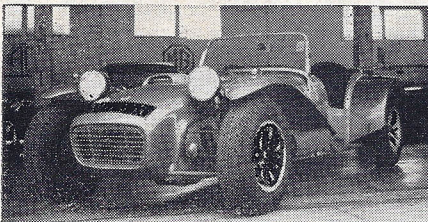
Telephone
01-340 7487



1968 LOTUS 7 Series II 1500 c.c. in orange, fitted cosmic Mag wheels, heater, full weather equipment £599
1968 TRIUMPH TR5, in dark blue with black trim, fitted overdrive and rostyle wheels. ... £995
1967 SUNBEAM Alpine in red, fitted overdrive, radio, one owner from new. ... £675



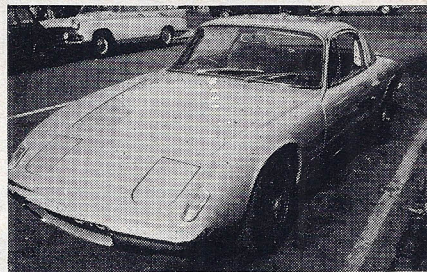
1968 TRIUMPH Spitfire in red with black trim, a very clean example. ... £599
1967 TRIUMPH TR4A, in dark blue with black trim fitted wire wheels, overdrive, radio ... £845



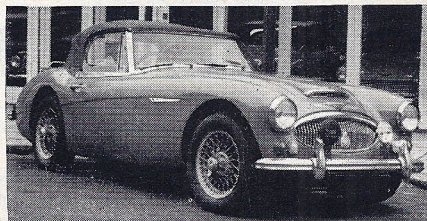
1968 M.G.-B. GT, yellow, fitted wire wheels, overdrive, radio ... £1,045
1968 M.G. Midget, in yellow, fitted wire wheels, recorded mileage, 28,000 ... £845

SPORTSCARS WANTED CASH OR PART EXCHANGE

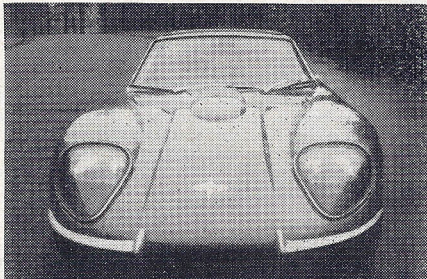
1967 M.G.-B. in white with black trim, fitted overdrive, radio, recorded mileage, 38,000 ... £775
1965 SUNBEAM Tiger in white with black trim, fitted push button radio, new tyres ... £625
1966 TRIUMPH Spitfire in dark blue with black trim, fitted hard-and soft-top ... £465
1965 AUSTIN Healey 3000 in red with black trim, fitted wire wheels, overdrive, radio, recorded mileage, 44,000 ... £725
1970 LOTUS Elan D.H.C. S.E. (Illustrated) in beige with black trim, one owner, a well maintained example, recorded mileage 12,000 ... £1,375
1968 FIAT 124 Sport Coupe in ivory with black trim, a fine example of this sports coupe, recorded mileage 23,000 ... £1,095
1969 TRIUMPH TR6 (Illustrated) in damson with black trim, fitted overdrive and radio, a well cared for example, with recorded mileage 23,000 ... £1,295
LOTUS Elan + 2 (Illustrated) in French blue with black trim, fitted radio, a well maintained example ... £1,275
1967 AUSTIN Healey 3000 (Illustrated) in blaze with black trim, fitted wire wheels, overdrive, an above average condition car, recorded mileage 44,000... £995
1968 TRIUMPH GT6 in red with black trim, fitted wide wheels, overdrive, a well cared for example ... £795
1969 M.G.-C. GT in mineral blue with black trim, fitted wire wheels, overdrive, radio, H.R.W. ... £1,095
1969 TRIUMPH Spitfire in white with black trim, one owner from new, recorded mileage 22,000 ... £739
1969 MARCOS 2-litre V4 (Illustrated) in tangerine with black trim, fitted chrome wire wheels, push button radio, one owner from new ... £1,345
1968 M.G.-B. in red with black trim, fitted wire wheels, overdrive, radio ... £925
1969 LOTUS 7 Series III (Illustrated) in B.R.G. and silver ally, wide wheels, full weather equipment recorded mileage 9,000 ... £895
1965 JAGUAR 'E'-Type convertible in red with black trim, fitted chrome wire wheels, radio, a beautiful example ... £1,150
1967 M.G. Midget Mk III 1275 c.c. in B.R.G. fitted wire wheels ... £545
1965 M.G.-B. in B.R.G. with black trim, fitted wire wheels, overdrive, very clean example ... £625
1968 MARCOS 1600 GT, in orange with black trim, wires, sun roof, radio ... £1,195
1966 JAGUAR 'E'-Type convertible in yellow, fitted push button radio, well above average condition ... £1,250
1969 M.G.-C. GT in white with black trim, fitted wire wheels, overdrive, one owner from new ... £1,135
1969 LOTUS Europa in Bahama yellow, fitted Mag wheels, radio, well maintained, recorded mileage 24,000 ... £1,150
DUE IN SOON. '65/6 TRs '66 Sprite. '69 3-litre Marcos. '69 'E'-Type D/H. '68 'E'-Type + 2 manual.



1967 JAGUAR 'E'-Type + 2, in yellow with black trim, fitted radio, H.R.W. a well maintained example ... £1,450



'G' Reg SAVAGE 3-litre V6, in silver fox, fitted radio, mag. wheels, a fine example of this rare car ... £995
1969 TRIUMPH GT6. Mk. II in maroon, fitted overdrive, radio, one owner from new, low mileage ... £1,025
1967 LOTUS Elan D.H.C. S.E., in yellow with black trim, very clean example ... £975



1968 'E'-Type convertible, in white with black trim, fitted C.W.W. radio, one owner from new, low mileage ... £1,595

DUE TO THE FACT THAT WE PURCHASE CARS DAILY IT IS IMPOSSIBLE TO LIST OUR CURRENT STOCK. IF THE CAR OF YOUR CHOICE IS NOT ADVERTISED, PLEASE DO NOT HESITATE TO TELEPHONE OUR SALES OFFICE OR, BETTER STILL, COME AND BROWSE AROUND OUR SHOWROOM!

FOR YOUR CONVENIENCE : 24-HOUR ROBOPHONE SERVICE.

405 GREEN LANES - HARRINGAY - LONDON N4

(Nearest station : Manor House Tube, Piccadilly Line)

(Location : A to Z, Page 30, Section B2)

OUR STOCK CHANGES DAILY

For cars not advertised, please phone. All cars in our showroom can easily be seen whilst we are closed.

INFORMATION

All cars three months guaranteed. All cars checked over in our workshops. Any car, motorcycle, etc., taken in part exchange.