

JK SPORTSCARS

405 GREEN LANES,
HARINGEY, LONDON N4 1EU
01-348 2222

1969 'E'-TYPE drophead, in sable with tan trim, fitted chrome wires, radio, slot stereo; one owner from new. A well cared for example £1,875

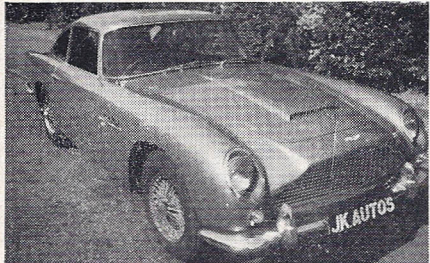
1968 RELIANT Scimitar GT, in light metallic blue with black trim, fitted overdrive and radio. Must be one of the nicest available £995

1971 LOTUS Sprint f.h.c., in red/white, fitted heated rear window, radio, one owner, low mileage ... £1,495



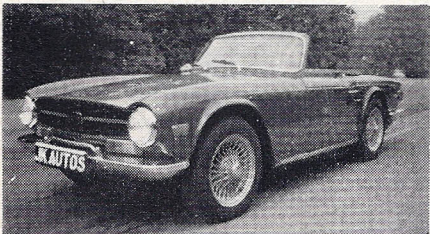
1970 M.G.-B roadster, in yellow ochre, fitted wire wheels, overdrive; one owner, 19,000 miles ... £1,125

1970 TRIUMPH TR6, in green with red trim, fitted overdrive, centre-bolt wheels and radio. A very bright example £1,325



1969 JAGUAR 'E'-Type f.h.c., in light blue with black trim, fitted chrome wires, radio, heated rear window; one owner from new £1,850

ASTON MARTIN DB6 Vantage, in Dubonnet Rosso with grey hide upholstery, fitted Selectaride suspension, Sundym glass, chrome wires, heated rear window, radio, electric aerial. A beautiful example £1,895



THREE MONTHS' GUARANTEE
ANY PART EXCHANGE ACCEPTED
HIRE PURCHASE & INSURANCE AVAILABLE

1970 TRIUMPH Spitfire, in white with black trim; mileage 17,000, one owner £795

1969 'H' Reg. MARCOS 3-litre, in metallic silver, fitted mag. wheels, sun-roof, radio; one owner from new, 24,000 miles. A well cared for example £1,295

1968 JAGUAR 'E'-Type drophead, in willow green with dark green trim, fitted chrome wires, radio; low mileage ... £1,595

1969 M.G.-B roadster, in red with black trim, fitted wire wheels and tonneau. A very nice low-mileage example £965

1970 M.G. Midget, in dark blue with black trim, fitted wire wheels, Bermuda hard-top £795

1969 TRIUMPH Spitfire, in yellow, fitted wire wheels, works hard and soft-top; one owner £695

SPORTS CARS WANTED

CASH OR PART EXCHANGE

1970 'J' Reg. M.G. Midget, in dark blue; one owner from new, 11,000 miles £825

1972 TRIUMPH TR6, in red with black trim, fitted radio, centre-bolt wheels. Major part of Manufacturer's Guarantee still available with this much sought after marque £1,595

1971 'K' Reg. M.G.-B roadster, in yellow ochre; one owner, 11,000 miles; fitted Rostyles £1,195

1968 LOTUS Elan +2, in yellow with black trim. A beautiful example, 28,000 miles £1,195

1966 JAGUAR 'E'-Type +2, in dark metallic green with dark green trim, fitted chrome wires, heated rear window, radio. Far above average condition £1,195

1969 M.G.-C GT, Automatic, in Grampian grey, fitted wire wheels. A well cared for example £995

1966 RELIANT Scimitar GT, in dark olive green, fitted overdrive. A beautiful example £795

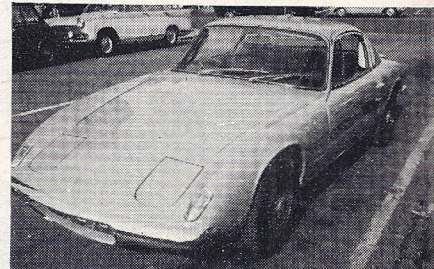
1967 JAGUAR 'E'-Type drophead, in dark metallic green, fitted chrome wires, radio £1,295

1970 'E'-Type JAGUAR drophead, in willow green with works hard-top, tinted screen and radio; one owner £2,095

1969 LOTUS Europa, in red; one private owner, low mileage £995

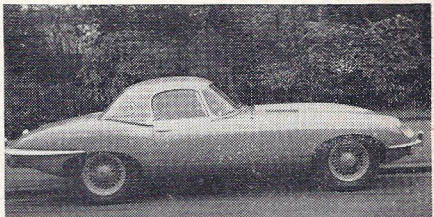
1969 LOTUS Elan drophead, Special Equipment, in chrome yellow, fitted radio £1,095

1971 M.G.-B GT, in blaise, fitted overdrive, Rostyle wheels, radio; one owner, low mileage £1,345



1970 RELIANT Scimitar GTE, in metallic silver, fitted overdrive, heated rear screen and radio; one owner, 18,000 miles £1,775

1968 M.G.-C roadster, in red, fitted overdrive, wire wheels and radio £835



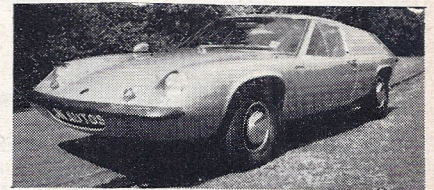
1971 TRIUMPH GT6, Mk. III, in sable with tan trim, fitted overdrive; one owner, low mileage ... £1,195

1968 TRIUMPH TR5, in red, fitted overdrive and radio £935

1970 ALFA ROMEO Junior GT, in yellow ochre; one owner from new, 21,000 miles. A pristine example £1,395

1970 T.V.R. Tuscan V6, in yellow, fitted mag. wheels, overdrive and radio £1,295

1971 TRIUMPH Spitfire Mk. IV, in yellow ochre; one owner, low mileage £895



Nearest station:

Manor House Tube, Piccadilly Line
(Location: A to Z, Page 30, Section B2)

OPEN 9.30 - 6.30 INC. SATURDAYS
AND FOR YOUR CONVENIENCE
24-HOUR ANSWERING SERVICE