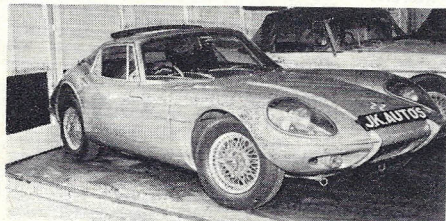


OPEN
10 a.m. - 7 p.m.

J. K. SPORTSCARS

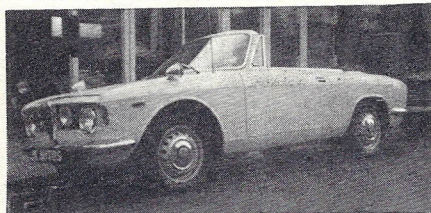
TEL :
01-340 7487



1967 **MARCOS 1650 GT**, Porsche orange, chrome wires, radio, sun roof, 29,000 miles £1,235

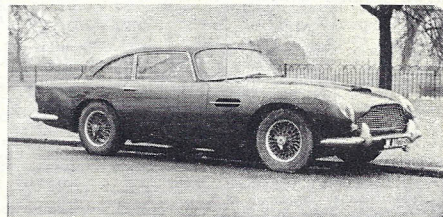
1968 **ELAN drophead S4**, s/e, yellow £1,275

1967 **ELAN drophead**, Porsche orange, knock-ons £1,135



1965 **ALFA ROMEO Giulia GTC**, guaranteed 31,000 miles, one owner, white. A 115 m.p.h., full four seater convertible. Rare car... .. £949

1967 **ALFA ROMEO GTV Veloce**, red, black trim, 28,000 miles, radio, 5-speed box. Beauty £1,145
 1964 **TR4**, w/w., o/d., white, black trim £565
 1965 **TR4**, blue, beautiful condition £579
 1965 **TR4A**, red with black trim £635
 1968 **M.G.-B**, B.R.G., o/drive, immaculate... .. £875
 1968 **SPITFIRE**, w/wheels, radio, red £669
 1964 **ALPINE**, blue, wires, hard/soft top, radio £475
 1967 'F' **TR4A**, blue, wires, o/drive, radio £859
 1967 **M.G.-B**, red, wires, o/drive, radio £775
 1965 **M.G.-B**, white, wires, o/drive, immaculate £639
 1967 **M.G. Midget 1,275 c.c.**, B.R.G., wires £539
 1965 **HEALEY 3000**, wires, o/drive, red £799
 1965 **ELAN S2 d.h.c.**, red, black trim, radio £790
 1966 **SPITFIRE**, choice of two cars from £490
 1966 **TR4A**, red, wires, o/drive, Surrey top £749
 1966 **SPRITE**, red, wires, radio, immaculate £449
 1966 **TIGER Mk. II 4.7-litre**, red, very very rare car, 29,000 miles, beautiful and original cond. £755
 1964 **ASTON MARTIN DB5**, finished in Aegean blue with beige hide upholstery, Selectaride suspension, reclining seats, electric windows, 5-speed gearbox, superb condition £1,645
 1966 **HEALEY 3000**, mineral blue, wires, overdrive, hard/soft tops, Firestone radials, immaculate £825
 1963 **DAIMLER SP250**, metallic silver with black trim. All steering just overhauled. Beautiful specimen. Spec. 'C' £625
 1966 'E'-type **2+2 Automatic**, white with black trim, h.r.w., one careful owner from new £1,595
 1966 **M.G.-B**, red, wires, immac., choice of two from £649
 1967/8 **SPITFIRE Mk. III**, blue, black trim, wires £635
M.G.-B GT, red, wires, immaculate £795
 1964 **SPITFIRE**, red. Looks like a '67 model, Weber, etc. £425
 'F' regd. **M.G.-B**, wires, radio, mineral blue £859
 1966 **TR4A**, wires, Surrey top, white £699



1965 **ASTON MARTIN DB5**, finished in opalescent claret with black hide interior, Selectaride suspension, reclining seats, 5-speed gearbox, electric windows £1,795

1967 **ELAN drophead**, Bahama yellow, knock-ons £1,093



1965 **JENSEN CV8 Automatic**, dark blue, Interceptor wheels, new tyres, beige interior, guaranteed mileage, history available, Blaupunkt radio, surprisingly easy to drive £1,450

DUE TO THE FACT THAT WE PURCHASE CARS DAILY IT IS IMPOSSIBLE TO LIST OUR CURRENT STOCK. IF THE CAR OF YOUR CHOICE IS NOT ADVERTISED, PLEASE DO NOT HESITATE TO TELEPHONE OUR SALES OFFICE, OR, BETTER STILL, COME AND BROWSE AROUND OUR SHOWROOM!

DISCOUNTS

Discounts given if you have no part exchange. Lowest Hire Purchase interest rates.

FOR YOUR CONVENIENCE: 24-HOUR ROBOPHONE SERVICE.

405 GREEN LANES - HARRINGAY - LONDON N4
(Nearest station: Manor House Tube, Piccadilly Line)

INFORMATION

All cars three months guaranteed. All cars checked over in our workshops. Any car, motorcycle, etc., taken in part exchange.