

MOTORWAY SPORTS CARS LTD. IN KENT

"TRY THEM UP THE MOTORWAY"

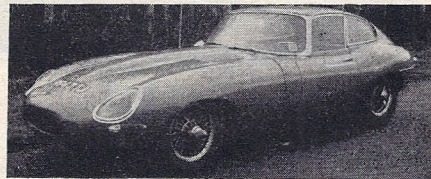
WANTED—SPORTS CARS

BEAR IN MIND OUR OUTSTANDING PRE-SALE OVERHAUL AND PARTS AND LABOUR GUARANTEE. WHY NOT SEE WHAT WE CAN OFFER YOU!

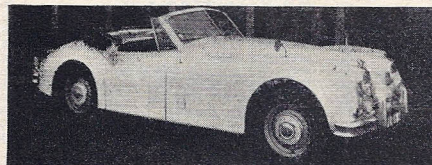


(Illustrated) **LOTUS Shapecraft Elan 1600**, 1964. An impeccable and really beautiful car. Radio etc. ... **£785**
ASTON MARTIN DB4 Superleggera, 1961, 4-seater. Overdrive, chrome wheels etc. A magnificent car... **£995**
ASTON MARTIN DB2-4 Mk. II, 1956, 4-str. convertible. A rare and exceptionally fine example ... **£585**
A.C. Ace 2.6, 1963. A magnificent near immaculate car with Ruddspeed Ford unit, overdrive etc. ... **£695**
A.C. Greyhound 4-str. GT, 1961. Bristol 1000D2 unit, wire wheels, etc., 2 owners. Rare and quite superb **£665**
M.G.-B GT 2/4-seater, 1967. Overdrive, wire wheels etc. Superb and almost impossible to fault ... **£895**
M.G.-B Sports Roadster, 1966 (December). Exceptionally clean and well kept. Wire wheels etc. ... **£665**
M.G.-B Sports Roadster, 1965. Radio etc. A truly outstanding and delightful one owner car ... **£560**
M.G.-A 1600 fixed-head coupé, 1960. Exceptional example with wire wheels, winding windows etc. ... **£345**

ALFA ROMEO Giulia 1600 Sprint GT, 1964. 4-seater, 5-speed gearbox etc. Really beautiful ... **£690**
MARCOS Mini, 1968 F. Virtually like new in marigold with fully trimmed black interior etc. ... **£595**
PORSCHE 1600 356B, 1960/61, 2/4-seater, fixed-head coupé. A particularly good example and very fast **£495**
(Illustrated) **JAGUAR E-type f.h.c.** Chrome wires etc. Must be one of the finest 3.8 Es available ... **£765**
TRIUMPH Spitfire Mk. III Sports, 1967, 1,300 c.c. A really first class, "one-owner-and-a-garage" example **£550**
TRIUMPH Spitfire Sports, 1964. An exceptionally tidy car with detachable hardtop etc. ... **£360**
TRIUMPH TR4 Sports Roadster, 1964. Wire wheels. Very clean indeed in white with black interior ... **£515**
TRIUMPH TR3A Sports Roadster, 1959. Most attractive and very much above average ... **£295**



AUSTIN Mini-Cooper 1275 'S', 1964. A delightful and extremely fast little car.



M.G. TF 1500 Roadster, 1965. Another outstanding specimen of this sought-after series ... **£495**
(Illustrated) **JAGUAR XK 140** 1956, 2/4-str. The best example we have seen for ages. Overdrive etc. ... **£345**
HEALEY 3000, Jaguar 3.4 engine. Words cannot do justice. The wheels are approx. 11 in. and 14 in. wide with large flared arches. The workmanship is excellent and the appearance is fantastic ... **£540**
HEALEY 3000 2/4-seater, 1960. Wire wheels, overdrive, hard/soft tops etc. Another superb example ... **£355**
HEALEY Sprite Mk. III, 1966. 1,098-c.c. engine, winding windows, etc. Remarkably well kept ... **£450**
HEALEY Sprite Mk. II, 1962. Another excellent example and most economical.
HEALEY Sprite Mk. I, 1961. An absolutely outstanding and original car. Detachable hardtop, etc. ... **£285**
LOTUS "Super 7", 1962. Ford 1300 unit, full weather equipment, America wings, etc. Superb.
LOTUS 7. Aquaplane Ford unit, wide wheels, etc. Retrimmed etc., and a real showpiece ... **£365**

VARIOUS SALOONS AT TRADE PRICES OR AN EXCELLENT ALLOWANCE ON YOUR SPORTS CAR. MANY DIFFERENT CARS NOW AVAILABLE — YOU MIGHT CARE TO TELEPHONE US

We pride ourselves that our cars are the **FINEST AVAILABLE**. They are all **OVERHAULED & SERVICED** and we offer our **FULL PARTS & LABOUR GUARANTEE (3 months or 3,000 miles)** on most cars made 1962 onwards — generous price **REDUCTIONS** for cars taken as they are

HIRE PURCHASE arranged on all cars.

PART EXCHANGES on almost any vehicle (including Motorcycles).

Third Party Insurance on balances up to £100. H.P. accounts settled.

INSURANCE arranged at low cost and by **EASY PAYMENTS** on request.

WE ARE SITUATED in BOUGHTON on the A2, 1 mile from the M2 Motorway and 6 miles from **CANTERBURY**, 50 miles from **LONDON** (33 are motorway)

OPEN—Mon to Wed 9-6, Thurs to Sat 9-9.

Sundays (not fully staffed) 10-6.

SECONDHAND TONNEAU COVERS £5.

THE STREET, BOUGHTON, NEAR FAVERSHAM, KENT.

TEL: BOUGHTON 223 — STD areas dial 022-775 2 23