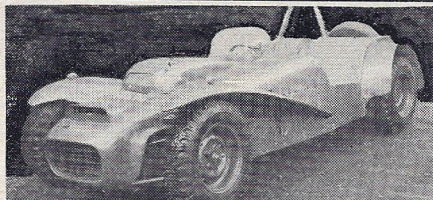
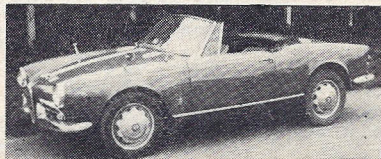


MOTORWAY SPORTS CARS LTD. IN KENT

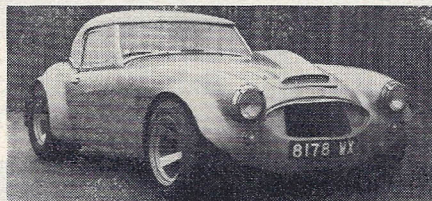
"TRY THEM UP THE MOTORWAY"



M.G.-B 2/4-seater, 1967. Overdrive, wire wheels, etc. Superb and very difficult to fault £870
M.G.-B sports roadster, 1966 (December). Exceptionally nice and well kept. Wire wheels, etc. £665
M.G.-B sports roadster, 1964. Overdrive, wire wheels, radio, etc. Absolutely first class.
M.G.-A 1600 fixed-head coupé, 1960. Delightful example with wire wheels, winding windows, etc. £345
M.G.-A 1600 roadster, 1960. Another really fine car with the excellent M.G. qualities £295
(Illustrated) **HEALEY JAGUAR 3000, 2/4-seater.** A fantastic car expertly fitted with Jaguar 3.4 engine, gearbox and overdrive, flared wheel arches, very wide wheels, etc., etc. Matching hard-top. Suitable for road or track £540
HEALEY 3000 2/4-seater, 1960. Overdrive, detachable hard-top, etc. Another superb example.
HEALEY Sprite Mk. III, 1966. Very attractive indeed with only one registered owner, lively 1,098-c.c. engine and, of course, winding windows. Minimal costs £450
HEALEY Sprite Mk. II, 1963, 1,098-c.c. engine, etc. Particularly nice, giving the impression of a newer car.
HEALEY Sprite Mk. I. An especially well-maintained example of this character series.



ASTON MARTIN DB4 Superleggera, 1961, 4-seater, overdrive, chrome wire wheels, radio, etc. A truly magnificent car with superb aluminium bodywork and luxurious interior £995
JAGUAR E-type fixed-head coupé. Sparkling chrome (including chrome wire wheels) and bodywork, smart black interior and outstanding mechanics must make this one of the finest 3.8 'E's available £765
LOTUS Shapecraft Elan 1600, 1964. An impeccable and really beautiful car. Radio £785
(Illustrated) **LOTUS 7/VOLVO.** A remarkable car with Volvo 1800 unit, etc. Extremely potent for road or track. (Trailer available)
LOTUS Cosworth 7, 1962. Twin double-choke Webers, America wings, etc., etc. Virtually immaculate £430
A.C. Greyhound 4-seater GT, 1961. Bristol unit, wires, etc. Two owners; rare and exceptionally fine £665
PORSCHE 1600 356B, 1960/61, 2/4-seater fixed-head coupé. A good example and very fast £495
FORD Cortina GT, 1966. Ideal for the sports-car enthusiast requiring plenty of room but excellent performance. Most attractive indeed and fitted with wide wheels, etc. £475



TRIUMPH TR4 convertible, 1965. All-independent suspension, etc. Very clean indeed.
TRIUMPH TR4 sports roadster, 1964. Truly outstanding, in white with black interior. Wire wheels, etc. £515
TRIUMPH TR4 sports roadster, 1962. Another superb example with overdrive, etc. £395
TRIUMPH TR3A sports roadster. Virtually immaculate in dark blue with black interior £295
TRIUMPH Spitfire Mk. III sports, 1967. 1,300-c.c. engine, etc. A really first class example at £550
TRIUMPH Spitfire sports, 1963. Particularly smart and very much above average.
JAGUAR XK140, 1956, 2/4-seater. The best example we have seen for ages. Overdrive, etc. £345
(Illustrated) **ALFA ROMEO Giulietta Spider, 1,300-c.c. d.h.c.** A really fine and desirable example £335

AND many others coming in (why not give us a call), including various saloons at trade prices or an excellent allowance on your sports car in part exchange.

We pride ourselves that our cars are the **FINEST AVAILABLE**. They are all **OVERHAULED & SERVICED** and we offer our **FULL PARTS & LABOUR GUARANTEE (3 months or 3,000 miles)** on most cars made 1962 onwards — generous price **REDUCTIONS** for cars taken as they are

HIRE PURCHASE arranged on all cars.

PART EXCHANGES on almost any vehicle (including Motorcycles).

WE ARE SITUATED in BOUGHTON on the A2, 1 mile from the M2 Motorway and 6 miles from CANTERBURY, 50 miles from LONDON (33 are motorway)

OPEN—Mon to Wed 9-6, Thurs to Sat 9-9.

Sundays (not fully staffed) 10-6.

SECONDHAND TONNEAU COVERS £5.

THE STREET, BOUGHTON, NEAR FAVERSHAM, KENT.

TEL: BOUGHTON 223 — STD areas dial 022-775 223

Third Party Insurance on balances up to £100. H.P. accounts settled. **INSURANCE** arranged at low cost and by **EASY PAYMENTS** on request.