

# SPORTS MOTORS



LOTUS

SCIMITAR GTE

ALFA ROMEO

JENSEN-HEALEY

MORGAN

## SCIMITAR GTE

1976 MODEL SCIMITAR GTE ON  
FACTORY ORDER  
DELIVERY ANTICIPATED FEB./MARCH.

**NEW SCIMITAR GTE Auto.**, in Celtic brown/tan int., alloy wheels, P.A.S., tinted glass.

**NEW SCIMITAR GTE Auto.**, in white/blue int., alloy wheels, electric windows, tinted glass, fog/spot lights.

**1975(P) SCIMITAR GTE Manual**, in April yellow, alloy wheels, tinted glass; one owner, low mileage ..... **£3,495**

**1975 SCIMITAR GTE Manual**, alloy wheels, radio ..... **£3,295**

**1973 SCIMITAR GTE**, O/d., alloy wheels, tinted glass, radio ..... **£2,345**

## LOTUS

**NEW ELITE 501**, in white ..... **List**

**NEW ECLAT**, in red ..... **List**

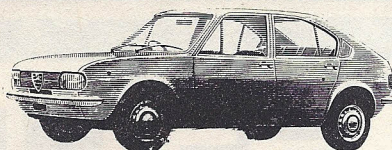
**1974(N) ELITE 502**, in white; one owner, supplied and serviced by ourselves, low mileage .... **£4,750**

**1974 LOTUS +2S 130/5**, garnet/oatmeal int., alloy wheels, tinted glass; low mileage .... **£2,995**

**1974 LOTUS +2S 130/4**, in yellow/oatmeal, alloy wheels, radio; one owner ..... **£2,650**

**1974 LOTUS +2S 130/5**, in yellow/oatmeal int., alloy wheels, tinted glass, radio ..... **£2,895**

**1973 LOTUS +2S 130/5**, green/silver roof, oatmeal int., alloy wheels, radio/stereo, tinted glass ..... **£2,495**



**1974 EUROPA Special 5-speed**, Roman purple, oatmeal int., alloy wheels, tinted glass ..... **£2,745**

**1974 LOTUS +2S 130/5**, white/oatmeal int., radio, alloy wheels ..... **£2,895**

## ALFA ROMEO

**NEW ALFETTA GT.** Choice of colour.

**NEW ALFETTA 1.6.** Choice of colour.

**NEW ALFETTA 1.8.** Choice of colour.

**NEW 2000 Saloon Auto.** Dutch blue.

**NEW SPIDER.** Dutch blue.

**NEW 1600 GT.** Choice of colour.

**NEW ALFASUD TI.** Choice of colour.

**NEW ALFASUD L.** Choice of colour.

**NEW ALFASUD SE.** Choice of colour.

**NEW ALFASUD N.** Choice of colour.

(Some of the above Alfas are available at pre-increase price.)

**1975(P) ALFETTA GT**, in Dutch blue, Momo wheels, radio; low mileage ..... **£3,750**

**1975(P) ALFETTA 1.8**, red/cloth int., tinted glass ..... **£2,795**

**1975(P) ALFETTA 1.6**, plum/beige vinyl roof, cloth int. .... **£2,545**

**1975(P) ALFASUD SE**, in Piper yellow... **£1,795**

**1974 ALFASUD**, in white with cloth int... **£1,395**

**1971 ALFA 1750 GTV**, one owner, 27,000 miles only, radio ..... **£1,295**

## JENSEN

**NEW JENSEN GT**, metallic maroon/leather int.

**1974 JENSEN HEALEY Mk. II**, in orange **£2,295**

## MISCELLANEOUS

**1973(M) JAGUAR V12 2+2**, red, chrome wheels ..... **£3,295**

**1975 MG-B GT**, yellow/black vinyl roof, sunroof ..... **£2,395**

**1975 Model MG-B GT**, harvest gold ..... **£2,295**

**1974 MG-B roadster**, o/drive, mustard... **£1,745**

**1974 MG-B roadster**, o/drive ..... **£1,745**

**1973 DATSUN 240Z**, in silver ..... **£1,895**

**1974 Model BMW 2002 Tii**, red/cloth int., h.r.w. Immaculate ..... **£2,395**

**CLEAN LATE SPORTS CARS  
WANTED FOR CASH**

## WANTED FOR CASH

Clean, low-mileage post-1973 Alfa Romeo 2000 Spider, 2000 GTV, 1600 GT, SUD and T1. MG-B roadster, GT and V8. Jensen Healey Mk. II. Datsun 240Z and 260Z. Lotus Elite, Europa, +2 and Sprint.

250 PLYMOUTH GROVE MANCHESTER M13 0BG

Telephone 061-224 3325/6/7 Telex 668570

OPEN 9.30 a.m. - 6.30 p.m.

CLOSED SUNDAY