

models of the month



JAGUAR

- 1973 XJ.6 S.11, M-Reg., 1,000 mls., Auto., radio, centre locking £4,295
- 1971 Daimler Sovereign 4.2 Auto., works rep. engine only 300 mls. £2,295
- 1971 XJ.6 4.2 Auto., Silver Grey, power steering, radio £2,195
- 1973 V.12 E Type 2+2 Auto., M-Reg., 5,000 mls., sundym, stereo £3,495
- 1973 V.12 E Type Rdstr., 2,000 mls., radio, stereo, electric aerial £3,245
- 1971 V.12 E Type 2+2 Auto., one owner, power steering, radio £2,545
- 1970 E Type 2+2, J-Reg., chrome wire wheels, sunroof, HRW £1,995
- 1970 E Type Rdstr., Silver Grey, Sundym, chrome wheels £1,595
- 1969 E Type FHC, with sunroof, HRW, reclining seats £1,495

RELIANT

- 1973 Reliant Scimitar GTE Auto., 11,000 mls., radio, stereo £2,495
- 1973 Reliant Scimitar GTE, o/d., Highland Purple, Sundym, stereo £2,395
- 1971 Reliant Scimitar GTE Auto., one owner, HR wndw., radio £1,695
- 1969 Reliant Scimitar GTE, overdrive, radio, Caribbean Green £1,395

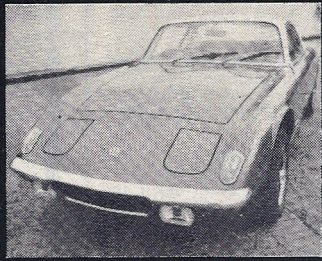
TRIUMPH

- 1973 Triumph TR6, latest model, 5,000 miles, o/d., Q.I. spots £1,525
- 1972 Triumph TR6, in White, o/drive, radio, electric aerial £1,225
- 1970 Triumph TR6, O/drive, wire wheels, Saffron/Black trim £895
- 1968 Triumph TR5 Coupe, two local owners, o/d., radio, exceptional £845
- 1973 Triumph Spitfire IV, 7,000 mls., one onr., o/drive, radials £1,045
- 1970 Triumph Spitfire III, Wedgewood Blue, H. & S. tops, radio £645
- 1972 Jensen Healey, L-Reg., 7,000 miles, alloy wheels, radio £1,395

M.G.

- 1973 MGBGT, latest model, 5,000 mls., o/drive, HR window £1,495
- 1971 MGBGT, one owner, o/drive, sunroof, wire wheels, H.R.W. £1,175
- 1969 MGBGT, o/drive, radio and stereo deck £895
- 1967 MGBGT, Tartan Red, F-Reg., 5-bearing unit, o/drive £645
- 1973 MGB Rdstr., 12,000 miles, one owner, o/drive, Rostyles £1,345
- 1958 Healey 100/6, 4-speed with overdrive, Silver Blue £525
- 1973 Morgan 4/4, 2-str., 5,000 mls., 1 onr., tonneau, bucket seats £1,695

LOTUS MAIN DEALERS



NEW LOTUS FOR IMMEDIATE DELIVERY

- +2S.130/5-speed. Yellow, velour trim, alloy wheels, HRW LIST
- +2S.130. White, Black trim, alloy wheels, tinted glass LIST
- Europa Special. 5-speed, Black, Oatmeal trim, tinted glass LIST
- Elan Sprint DHC. Last one available, radio
- 1973 Lotus +2S.130/5-spd., Tawny, 4,000 miles, alloy wheels £2,595
- 1971 Lotus +2S.130, Nov. K-Reg., 15,000 mls., HR window, radio £1,895
- 1970 Lotus Elan +2S, radio, stereo tape deck, chrome wheels £1,545
- 1973 Lotus Europa Special 5-speed, alloy wheels, one owner £2,095
- 1972 Lotus Europa Twin Cam, L-Reg., 7,000 mls., one owner £1,745
- 1972 Lotus Europa Twin Cam, Pistachio, power windows £1,595
- 1972 Lotus Elan Sprint DHC, one owner, tonneau, K.O. whls. £1,645
- 1971 Lotus Elan Sprint DHC, K-Reg., Sundym, radio, Colorado £1,395
- 1971 Lotus Elan Sprint FHC, radio, K.O. wheels, K-Reg. £1,395
- 1969 Lotus Cortina, one owner from new, radio, spots, etc. £695

This is only part of our total stock - if you don't see what you're looking for give us a ring



Swanmore

1174-80 Christchurch Rd
Bournemouth
Tel Bournemouth 43344
9am-7pm (Saturday 9am-6pm)