



**Swanmore**

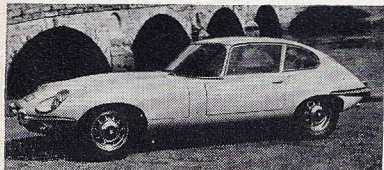
meet the  
car that's  
waiting to  
meet you

TEL BOURNEMOUTH  
43344

Swanmore

**1971 TRIUMPH TR6 PI roadster.** Damson with black trim. 8,000 miles. Fitted overdrive, hard and soft tops. ... £1,395  
**1969 TRIUMPH TR6 PI roadster.** Navy blue. Hard and soft tops, radio, twin spot lamps ... £1,145  
**1968 TRIUMPH TR5 PI-coupe.** Jasmine. Fitted overdrive, tinted screen, Surrey top, radio... £1,025  
**1968 TRIUMPH TR5 PI roadster.** Royal blue. Fitted overdrive, wire wheels with SP sport tyres. ... £1,025

**1971 TRIUMPH GT6 Mk. III.** Saffron. Fitted overdrive, h.r.w., radio. One owner. ... £1,245  
**1970 TRIUMPH GT6 Mk. II.** One owner. Fitted overdrive, h.r.w., radial tyres... £1,045  
**1967 TRIUMPH GT6.** White with black interior. Fitted overdrive, radial tyres, h.r.w. ... £675  
**1971 TRIUMPH Spitfire Mk. IV.** Powder blue, black int. Fitted sculptured wheels, radio... £925  
**1970 TRIUMPH Spitfire.** 16,000 miles from new. Fitted radial tyres, seat belts, wing mirrors... £795  
**1969 TRIUMPH Spitfire.** Navy blue with black interior. Wide wheels with radial tyres and seat belts ... £725  
**1968 TRIUMPH Spitfire, 'G' Reg.** Blue with matching interior. Fitted wire wheels, tonneau and radio ... £645  
**1966 TRIUMPH Spitfire.** Fitted hardtop. Clutch and exhaust system recently replaced ... £525



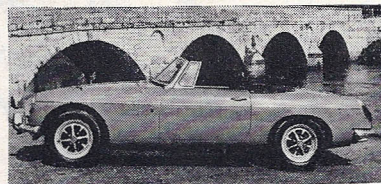
**1970 'E'-Type 2+2 Mk. II automatic** (similar to above). 19,000 miles with one owner. Primrose with black trim. Fitted P.A. steering, sunroof, tinted glass, h.r.w., radio/tape deck ... £2,495  
**1970 'E'-Type 2+2 Mk. II automatic.** Pearl grey. 12,876 miles. Fitted h.r.w., radio/tape deck... £2,495  
**1970 'E'-Type 2+2 Mk. II.** Silver grey. Fitted chrome wire wheels, tinted glass, h.r.w., radio ... £2,345

**1970 'E'-Type roadster Mk. II.** 12,000 miles only. Primrose. Fitted chrome wire wheels and radio ... £2,195

**1971 'E'-Type f.h.c. Mk. II.** 4,693 miles. One of the last 6 cyl. 'E'-Types. H.R.W., tape deck... £2,745  
**1970 'E'-Type f.h.c. Mk. II.** 12,000 miles. Fitted chrome wire wheels, radio, reclining seats ... £2,195  
**1970 'E'-Type f.h.c. Mk. II.** Regal red, beige int. h.r.w., chrome wire wheels, radio ... £2,095  
**1968 'E'-Type f.h.c.** Genuine 8,000 miles only. Primrose. Chrome wire wheels, h.r.w., sunroof radio ... £1,945

**1969 'E'-Type 2+2 Mk. II.** Carmen red with black trim. Fitted h.r.w., radio ... £1,795  
**1969 'E'-Type roadster.** Carmen red, black int. Fitted SP sport tyres and radio ... £1,795  
**1968 'E'-Type 2+2.** Open headlight model. Op. silver grey. Fitted wire wheels, radial tyres... £1,545  
**1965 'E'-Type f.h.c.** Silver grey with red interior. Sunroof, wire wheels, radio ... £1,095

**PART EXCHANGES.** Any car, van, motorcycle, 3-wheeler, etc., taken in. HP accounts settled. HP Very attractive terms offered for all cars. **INSURANCE** No problem to us. Free **DELIVERY** to any part of UK. **EXPENSES** Customers' fares refunded. **GUARANTEE** Three months' written guarantee on all cars.



**1972 M.G.-B roadster Mk. III** (similar to above). 800 miles only. Teal blue with tan interior. Fitted overdrive, Rostyle wheels ... £1,325  
**1971 M.G.-B roadster, 'K' Reg.** Midnight blue. 5,000 miles with one owner. Fitted Rostyle wheels ... £1,245

**1971 M.G.-B roadster.** 11,000 miles. Blue with black interior. Fitted overdrive, tonneau, rec. seats ... £1,245

**1970 M.G.-B roadster, Dec. 'J' Reg.** 18,000 miles. Fitted overdrive, radio and Rostyle wheels... £1,225

**1970 M.G.-B roadster, 'J' Reg.** B.R.G. Fitted overdrive, Rostyle wheels, rec. seats... £1,145

**1969 M.G.-B roadster.** Signal red, black int. Fitted wire wheels, radial tyres, tonneau and seat belts ... £995

**1971 M.G.-B GT.** 4,258 miles only. Fitted extras include overdrive, wire wheels, rec. seats ... £1,445

**1971 M.G.-B GT.** Mallard green. 10,000 miles. One owner. Overdrive, wire wheels, radio... £1,425

**1971 M.G.-B GT.** Midnight blue. Fitted overdrive, Rostyle wheels, radio, reclining seats... £1,345

**1970 M.G.-B GT.** Glacier white. 19,000 miles with one owner. Fitted overdrive, Rostyle wheels £1,295

**1969 M.G.-B GT.** Snowberry white. Fitted overdrive, radio, reclining seats and seat belts ... £1,095

**1968 M.G.-B GT.** All synchro gearbox. B.R.G. Overdrive, wire wheels. New exhaust system ... £995

**1966 M.G.-B GT.** O.E. white. Fitted overdrive, radio and twin spots ... £795

**1967 M.G.-B roadster.** Mineral blue. Fitted Bermuda hardtop, overdrive, push button radio ... £795

**1965 M.G.-B roadster.** B.R.G. 5 main bearing engine. Fitted overdrive, wire wheels and radial tyres ... £595

**1970 M.G.-C GT.** Glacier white, black int. 14,000 miles. Wire wheels, sunroof and rec. seats... £1,095

**1971 M.G. Midget.** Glacier white. One owner from new. Fitted Rostyle wheels and rec. seats ... £875

**1967 M.G. Midget.** 1275-c.c.-engine. Black. Wire wheels and radial tyres. Recent engine overhaul ... £585

**1966 M.G. Midget.** B.R.G. Wire wheels with Goodyear GP tyres. New clutch fitted ... £545

**1967 AUSTIN HEALEY 3000 Conv. Mk. III.** Ice blue, black int. Fitted overdrive, wire wheels £1,095

**1964 AUSTIN HEALEY 3000 Conv. Mk. III.** Fitted overdrive, wire wheels and push button radio ... £695

**1970 AUSTIN HEALEY Sprite Mk. IV.** Bronze yellow. Wire wheels with radial tyres, reclining seats ... £785

**1966 AUSTIN HEALEY Sprite.** B.R.G., black trim. New clutch and front dampers fitted... £495

**1970 RELIANT Scimitar GTE.** Mexican red. Fitted overdrive, h.r.w., radio and rec. seats... £1,695

**1968 RELIANT Scimitar 3-litre.** Golden sand. Overdrive and radio. New exhaust system fitted ... £995

**1971 LOTUS Elan +2S 130.** 8,000 miles. K.O. chrome wheels, h.r.w., power windows, radio ... £2,095  
**1969 LOTUS Elan +2.** Bahama yellow, black int. Power windows, K.O. wheels, radio, seat belts ... £1,395  
**1968 LOTUS Elan +2.** Lotus yellow. One owner from new. Fitted radio, power windows ... £1,295  
**1972 LOTUS Europa Twin Cam.** 670 miles from new. Fitted Dunlop Alloy wheels, SP sport tyres ... £1,645

**1969 LOTUS Europa.** Lotus yellow with black int. Fitted power windows, radio and seat belts ... £1,145

**1971 LOTUS Elan Sprint.** Bahama yellow. 4,000 miles. Fitted power windows and K.O. wheels ... £1,595

**1970 LOTUS Elan S4, f.h.c., 'J' Reg.** One owner. French blue with black interior. K.O. wheels and SP sport tyres ... £1,275

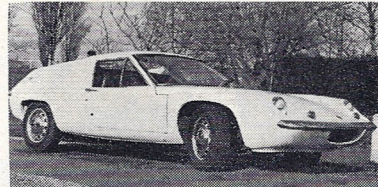
**1967 LOTUS Elan S3, f.h.c., 'F' Reg.** Bahama yellow. Fitted K.O. wheels, recent brake overhaul ... £895

**1967 LOTUS Elan S3, d.h.c. S/E model.** Lotus yellow with black trim. Fitted power windows and radio ... £895

**1971 LOTUS Super Seven Ser. 4.** French blue. Rostyle wheels. Full weather equipment ... £945

**1969 LOTUS Super Seven.** Flame orange with black trim. Ford crossflow unit ... £695

**1970 LOTUS Cortina.** Dragon red, black int. Fitted sunroof, radio and radial tyres... £995



**1971 LOTUS Europa S2** (similar to above). Carnival red. 7,000 miles. Cosmic alloy wheels, power windows... £1,395

**NEW LOTUS FOR IMMEDIATE DELIVERY**

**LOTUS +2S 130.** Lagoon blue, silver roof. Fitted heated rear window and radio. List

**LOTUS Europa Twin Cam.** Lagoon blue, oatmeal trim. Fitted Brand Lotus wheels. List.

**LOTUS Europa Twin Cam.** Pistachio with black trim. (in component form). List.

**LOTUS Europa Twin Cam.** Colorado with black trim. (in component form). List.

**LOTUS Elan Sprint d.h.c.** Regency/white. (in component form). List

**1967 ASTON MARTIN DB6.** Sunroof, chrome wire wheels, tinted electric windows... £2,245

**1969 T.V.R. Tuscan.** Ford V6 unit. Overdrive, alloy wheels, tinted glass, h.r.w. ... £1,295

**1966 BOND Equipe GT4S.** Golden sand with black int. Recent front suspension overhaul ... £445

**1970 MINI 1275 GT.** Scarlet, black int. Fitted Rostyle wheels, seat belts ... £645

**1971 FORD Escort Mexico.** Choice of 2. Maize or white. Both one owner. Fitted contour seats ... £1,045

**1969 MARCOS 3-litre.** Silver blue. Fitted overdrive, sunroof, alloy wheels and radio ... £1,395

THIS IS ONLY A PART OF OUR TOTAL STOCK — IF YOU DON'T SEE WHAT YOU'RE LOOKING FOR, GIVE US A RING