

# models of the month



## JAGUAR

- 1973 V12 E-Type 2+2, 315 mls. ring for further details.
- 1974 V12 E-Type Rdstr. Reg. June, 217 miles only. . . . . **£3,745**
- 1973 'M' V12 E-Type Rdstr. Auto. 1,500 miles, hard top. . . . . **£3,395**
- 1973 V12 E-Type Rdstr. 7,000 miles, radio, stereo . . . . . **£3,695**
- 1973 'M' V12 E-Type 2+2, Auto. 9,000 miles, 1 owner. . . . . **£3,695**
- 1973 'M' V12 E-Type 2+2, Green Sand, 9,000 miles, radio. . . . . **£3,695**
- 1972 'L' V12 E-Type 2+2 Auto. Sundym sunroof, stereo. . . . . **£2,895**
- 1972 V12 E-Type 2+2, 13,000 miles, chrome wheels, HRW **£2,745**
- 1971 V12 E-Type 2+2, low mileage, BR Green, tan trim . . . . . **£2,495**
- 1970 E-Type f.h.c. exceptional, 2 owner car, many extras. . . . . **£1,695**
- 1970 E-Type 2+2 Auto. Powder Blue, wire wheels . . . . . **£1,645**

## LOTUS MAIN DEALERS

### NEW LOTUS FOR IMMEDIATE DELIVERY

- New Elite 502 - Beaujolais, air conditioning . . . . . **LIST**
- + 2S 130/5, Sable, oatmeal trim, radio . . . . . **LIST**
- Europa Special 5 Speed JPS colours . . . . . **LIST**
- Elite demonstrator available.

- 1973 +2S 130/5 speed, 9,000 miles, alloy wheels. **£2,445**
- 1973 'M' Europa Special, 5 speed, 4,000 mls. stereo. . . . . **£2,295**
- 1972 'L' Europa twin cam Carnival Red, 7,000 miles. . . . . **£1,695**
- 1972 Europa twin cam, alloy wheels, Colorado . . . . . **£1,595**
- 1972 Elan Sprint, one owner, radio, tonneau. . . . . **£1,525**
- 1971 'K' Elan Sprint f.h.c. Carnival Red, tinted screen . . . . . **£1,395**
- 1972 Aston Martin DBS 6, air conditioning, radio . . . . . **£4,495**
- 1969 Aston Martin DBS 6, Platinum, power steering, auto. . . . . **£2,845**
- 1972 Ferrari Dino, low mileage, elec windows, radio. . . . . **£3,745**
- 1962 Austin Healey 3000 Mk II, o/drive, wire wheels. . . . . **£845**
- 1964 Bristol 408 Auto. PA steering, radio, etc. . . . . **£1,395**

## MG

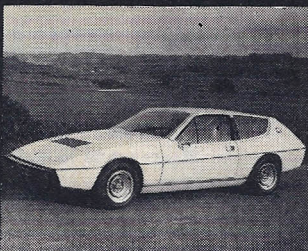
- 1974 MG-BGT, 6,000 miles, overdrive, sundym radio . . . . . **£1,795**
- 1972 MG-B GT Spruce Green, overdrive, stereo. . . . . **£1,325**
- 1973 MG-B Rdstr. 6,000 miles, overdrive, rostyle. . . . . **£1,345**
- 1971 'K' MG-B Rdstr. one owner, o/drive, wires, tonneau. . . . . **£995**
- 1973 MG Midget, 13,000 miles, white, black trim, radio. . . . . **£895**

## RELIANT

- 1973 Reliant Scimitar GTE 10,000 miles, radio, stereo. . . . . **£2,395**
- 1972 Reliant Scimitar GTE o/drive, radio, HRW . . . . . **£2,045**

## TRIUMPH

- 1973 'L' Stag Auto. h&s tops, radio, one owner. . . . . **£2,195**
- 1973 'M' TR6 10,000 miles, radio, overdrive. . . . . **£1,525**
- 1973 TR6 Carmine Red, o/drive, one owner. . . . . **£1,475**
- 1972 'L' TR6, one owner, h/top, o/drive. . . . . **£1,395**
- 1971 TR6 in Damson, overdrive, rec. seats . . . . . **£1,095**
- 1973 Spitfire Mk IV, 10,000 miles, radio, tonneau. . . . . **£975**



This is only part of our total stock - if you don't see what you're looking for give us a ring



# Swanmore

1174-80 Christchurch Rd  
Bournemouth  
Tel Bournemouth 43344  
9am-8pm (Saturday 9am-7pm)