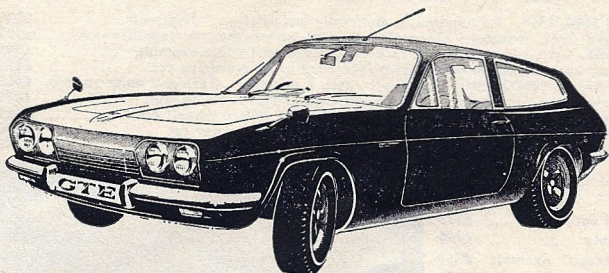




# THE CHEQUERED FLAG



**THE 1970 RELIANT SCIMITAR GTE and 3-LITRE GT.** Both of these fine cars are immediately available for your examination and trial. We will be very pleased to demonstrate either of these outstanding four-seater or 2+2 cars at your home or office, whichever is the more convenient. Earliest possible delivery with choice of colours from the **LEADING RELIANT DISTRIBUTORS**. The GTE now has either Automatic Transmission or Manual gearbox with overdrive.

**SHELBY-MUSTANG GT350.** Fabulous "Bullit" car in royal blue! Full Cobra unit, mag-wheels, 4-speed manual box, radio, etc. 1 onr. 20 T. **£1,985**

**ALFA ROMEO Giulia 1600.** Choice of two of these fine twin-cam cars with the 5-speed gearbox, both truly immaculate, in red, one GT coupé and one Spider. **Each £695**

**RELIANT Scimitar 2.6 GT.** Choice of two of these fine straight-six cars, white or silver-blue, both wire wheels, radials, radio, belts: one sun-roof **£865**

**M.G.-B roadster.** Sandy beige, red trim, overdrive, wires with XAS tyres, radio, tonneau, leather wheel, special exhaust, etc. **£565**

**SUNBEAM Tiger.** First reg. Nov. 1966, one owner, from new. Finished in B.R.G. and fitted with hard- and soft-tops, radio, Cints., etc. Excellent value at **£765**.

**M.G. Midget Mk. III** Choice two one-owner 'G' regd. cars in red or primrose, both with black trim, both wire wheels, etc. From **£635**

**TR5 2500 PI.** Unblemished red car with Surrey top, overdrive, wire wheels, radio, XAS tyres, one owner, low mileage. **£1,095**

**MERCEDES-BENZ 190SL.** Horizon blue roadster with hard- and soft-tops, etc. Fine specimen of this rare car, regd. FJJ 6C. **£865**

**HONDA S800 open sports, 1967.** Red with black cockpit. **£485**

**T.V.R. 1800 S.** 1967 car in purple and gold, M.G.-B unit with Weber, special wide wire wheels, with G800s, etc. **£795**

**SPITFIRE Mk. II,** royal blue/black trim, hard/soft tops, radio, rack, leather wheel, 1966. **£495**

**M.G. Midget.** Choice four Mk. I cars, various colours. From **£295**

**SUNBEAM Alpine S. III,** gold with black trim and hard-top, soft-top, overdrive, wide wheels, etc. **£365**

**M.G.-A.** Outstanding 1962 Mk. II car in royal blue/red trim, k/o wheels, radio, G.800s, rack, etc. **£385**

**LOTUS EUROPA SII.** A one-owner specimen in white with black trim, 6,000 miles only, radio, electric windows, WP tyres. **£1,585**

**LOTUS Elan series III coupe, 1967.** Full special equipment, sunburst yellow. **£1,095**

**COOPER I275S.** Primrose with black vinyl roof, XAS tyres, etc. 1967 car. **£565**

**SPRITE Mk. II** Choice two outstanding cars, one in cherry and one with Ashley front, wide wheels, etc. In Canary yellow. From **£235**

**LOTUS Elan Plus Two.** Unblemished 1969 car in Bahama yellow, just 8,000 miles by one careful owner, G800s, h.r.w., Pye major, etc. **£1,595**

**JAGUAR E-Type.** Fixed-head coupé, 1966 series, 4.2-litre, in midnight blue with red interior, chrome wires, Cinturatos, radio, heated rear window, etc. **£1,235**

**MORGAN 'Plus Four'** two-seater, a fine, one-owner 1964 car in blue with black cockpit, wire wheels, Cinturatos, etc. **£495**

**SPRITE Mk. IV I275 c.c.** car in blue with black trim, wires/'ZX' tyres, radio, etc. **£535**

Also six other hand-picked Mk. III Sprites. From **£395**

**M.G.-B.** Unmarked 1968 'F' car in white with red trim; fitted overdrive, wire wheels, with S.P. tyres, folding hood, Sebring mirrors, etc. **£895**

In addition to the cars featured above, we have another 30 new and used sports and GT cars — our stock constantly changes — if you do not see the car that you seek please ring 01-995 0022/3 and we will try and help.

**LONDON'S LEADING SPORTS CAR SPECIALISTS**

**THE CHEQUERED FLAG**  
ENGINEERING LTD.

548-560 Chiswick High Road, London, W.4 Telephone: 01-995 0022/3